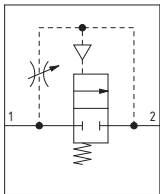


Progressive start-up valve (AP - APW)



- Progressive start-up valve
- Available in 4 sizes with flow rates up to 15000 NI/min and connections from 1/8" to 1"
- Suitable for downstream system gradual pressurization
- Downstream circuit filling time regulated via a built in flow regulator
- Full pressure is allowed once the down stream circuit pressure reaches 50% of the inlet pressure
- Atex certification (II 2GD or II 3GD)



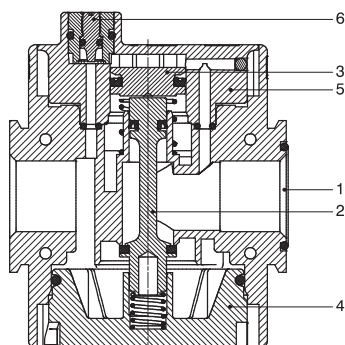
Technical characteristics						
Size		Size 1	Size 2	Size 3	Size 4	
Body and connections type		/		Aluminium body, integrated aluminium connections (P version)		
		Technopolymer body, integrated technopolymer connections (T version)				/
		Technopolymer body, metal connections (N version)				
IN / OUT connections	T version	G1/4"	G3/8"	G1/2"	not available	
	N version	G1/8" - G1/4" - 1/4 NPT	G3/8" - G1/4" - 3/8 NPT	G3/8" - G1/2" - 1/2 NPT		
	P version	not available	G3/8"	G1/2"		
Assembly configuration		Stand alone				
		/			Panel mounted	
Assembly positions		Indifferent				
Max. fittings torque IN / OUT connections	G1" metal	/		/	35Nm	
	G1/2" metal			30Nm		
	G1/4" metal	20Nm		/	/	
	G1/8" metal	15Nm	/	/		
	G3/8" metal	/	25Nm			
	G1/2" technopolymer	/	22Nm			
	G1/4" technopolymer	9Nm	/	/		
	G3/8" technopolymer	/	16Nm			

Operational characteristics				
Size	Size 1	Size 2	Size 3	Size 4
Maximum working pressure	13 bar			10 bar
Minimum working pressure	2,5 bar			
Working temperature	-5°C...+50°C			
Nominal flow rate at 6 bar with $\Delta p = 1$ (from 1 to 2)	1400 NI/min	2200 NI/min	3600 NI/min	15000 NI/min
Fully open flow control device maximum flow rate	75 NI/min	200 NI/min		1000 NI/min

Weights				
Size	Size 1	Size 2	Size 3	Size 4
Technopolymer body version	80 g	150 g	240 g	/
Aluminium body version	/	235 g	370 g	1100 g



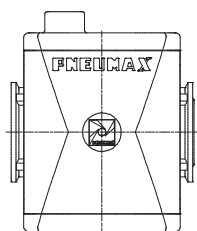
Materials Exploded sectioned



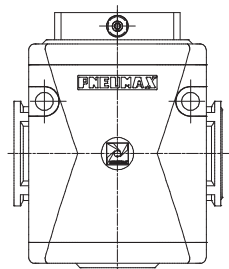
Progressive start-up valve		
1	Body	Polyamide Die-cast aluminium
2	Drive pin	Aluminium
3	Piston	Aluminium
4	Rear end cap	Polyamide / Die-cast aluminium
5	Central support	Polyamide / Aluminium
6	Modulating needle	Brass

Design

Size 1 - Size 2 - Size 3



Size 4

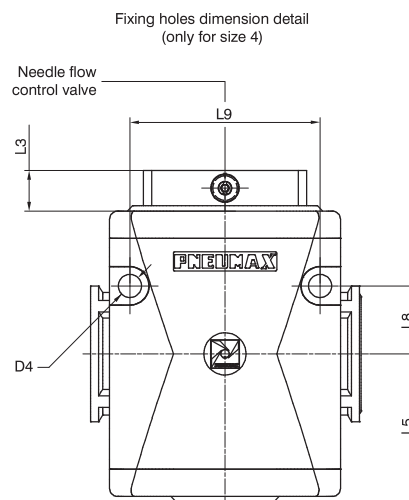
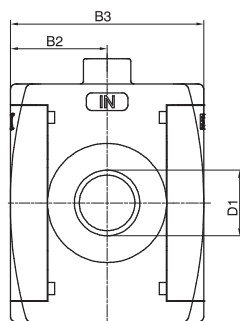
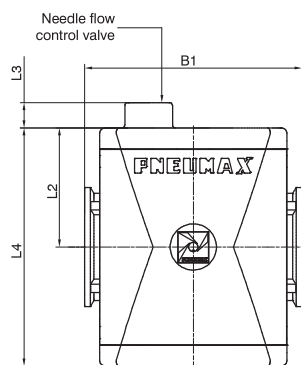


Coding: V17TAPF

V	VERSION
	N = Technopolymer body and metal inserts (not available for size 4)
	T = Technopolymer body and thread (not available for size 4)
	P = Aluminum body (not available for size 1)
T	SIZE AND CONNECTIONS
	1A = Size 1 - G1/8" only for N version
	1B = Size 1 - G1/4" only for T - N versions
	1C = Size 1 - 1/4" NPT only for N version
	2A = Size 2 - G1/4" only for N version
	2B = Size 2 - G3/8" for all versions
	2C = Size 2 - 3/8" NPT only for N version
	3A = Size 3 - G3/8" only for N version
	3B = Size 3 - G1/2" for all versions
F	3C = Size 3 - 1/2" NPT only for N version
	4B = Size 4 - G1" only for P version
	FLOW DIRECTION (ONLY FOR SIZE 4)
	= From left to right
	W = From right to left

Example: T173BAP: Size 3 progressive start-up valve G1/2"

Dimensions



Model	B1	B2	B3	D1	D4	L2	L3	L4	L5	L8	L9
#171..	48	21	42	G1/8" G1/4"	/	27,5	12	55	/	/	/
#172..	62	28.5	57	G1/4" G3/8"		34	9.2	68			
#173..	73	32.5	65	G3/8" G1/2"		40	8.7	80			
#174..	99	44	88	G1"	8.5	52.5	13	105	54.5	25	70