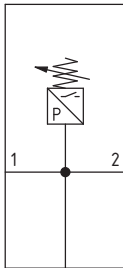


Pressure switch (PP)



- ▶ 2 to 10 bar adjustable pressure switch with electrical connection
- ▶ The electrical connection is made by mean of a 15 mm connector (DIN 43650 type C)
- ▶ The microswitch contact could be normally closed or open (change overswitch)



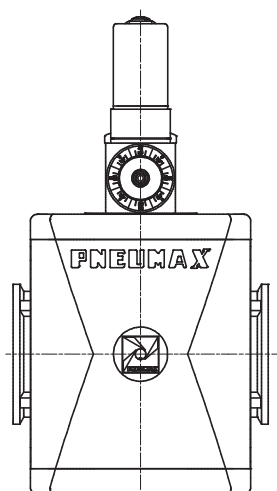
Technical characteristics					
Size		Size 1	Size 2	Size 3	Size 4
Body and connections type		/		Aluminium body, integrated aluminium connections (P version)	
		Technopolymer body, integrated technopolymer connections (T version)			/
		Technopolymer body, metal connections (N version)			
IN / OUT / INTAKE connections	T version	G1/4"	G3/8"	G1/2"	not available
	N version	G1/8" - G1/4" - 1/4" NPT	G3/8" - G1/4" - 3/8" NPT	G3/8" - G1/2" - 1/2" NPT	
	P version	not available	G3/8"	G1/2"	G1"
Assembly configuration		Stand alone			
Assembly positions		/			Panel mounted
Microswitch capacity		Indifferent			
Microswitch maximum tension		1A			
Microswitch maximum tension		250 VAC			
Microswitch IP Rating		IP65 (with mounted connector)			
Max. fittings torque IN / OUT / INTAKE connections	G1" metal	/		/	35Nm
	G1/2" metal			30Nm	/
	G1/4" metal	20Nm	/		
	G1/8" metal	15Nm	/		
	G3/8" metal	/	25Nm		
	G1/2" technopolymer	/	22Nm		
	G1/4" technopolymer	9Nm	/		
	G3/8" technopolymer	/	16Nm	/	

Operational characteristics				
Size	Size 1	Size 2	Size 3	Size 4
Maximum working pressure	13 bar			
Working temperature	-5°C...+50°C			
Operating pressure range	2 - 10 bar			

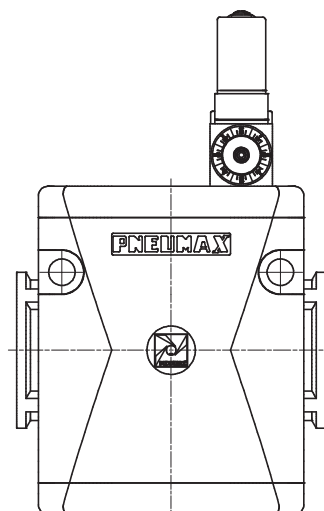
Weights				
Size	Size 1	Size 2	Size 3	Size 4
Technopolymer body version	138 g	179 g	235 g	/
Aluminium body version	/	330 g	780 g	800 g



Size 1 - Size 2 - Size 3

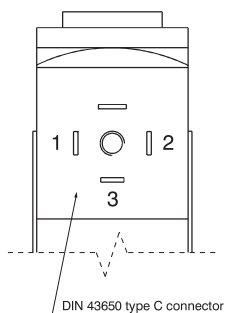


Size 4



Electrical connection

- 1 = neutral
- 2 = N.C. contact
- 3 = N.O. contact

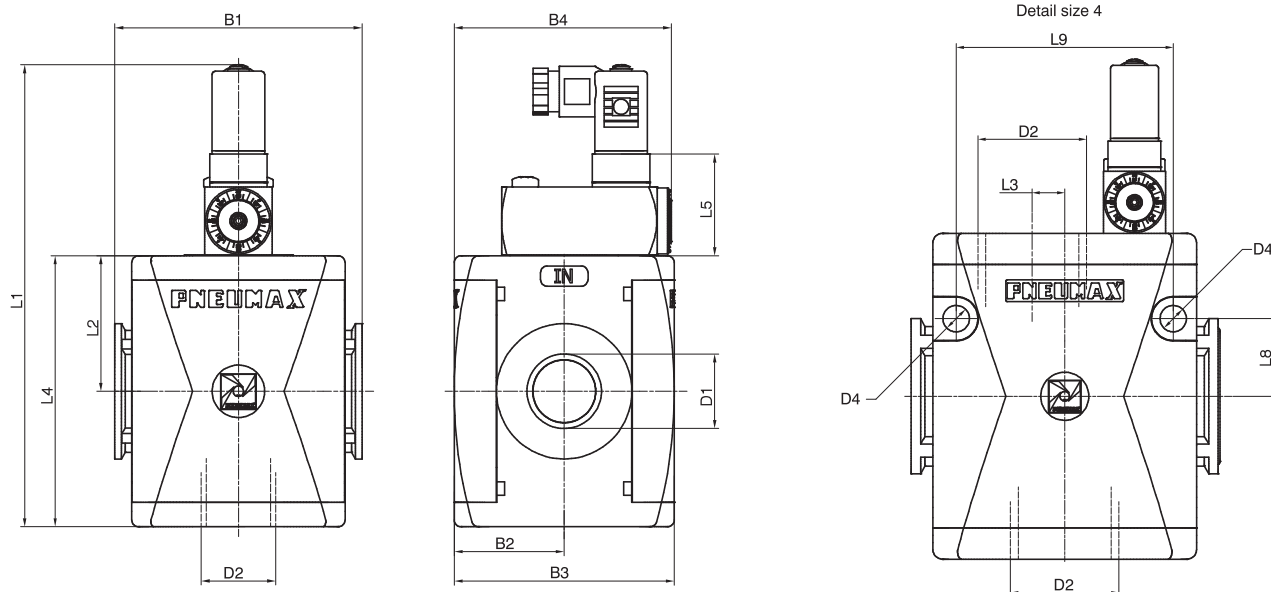


Coding: V17T1PPF

V	VERSION
	N = Technopolymer body and metal inserts (not available for size 4)
	T = Technopolymer body and thread (not available for size 4)
T	SIZE AND CONNECTIONS
	1A = Size 1 - G1/8" only for N version
	1B = Size 1 - G1/4" only for T - N versions
F	FLOW DIRECTION (ONLY FOR SIZE 4)
	= From left to right
	W = From right to left

Example: T173BPP: Size 3 pressure switch G1/2"

Dimensions



Model	B1	B2	B3	D1	D2	D4	L1	L2	L3	L4	L5	L8	L9
#171..	48	21	42	G1/8"	G1/4"	1/4 NPT	114.7	27.5		55	32.7		
#172..	62	28.5	57	G3/8"	G1/4"	3/8 NPT	125	34		68	30		
#173..	73	32.5	65	G3/8"	G1/2"	1/2 NPT	137	40		80			
#174..	99	44	88	G1"		8.5	162	52.5	10.5	105		25	70