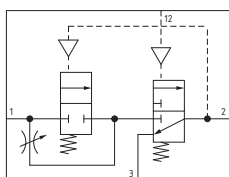
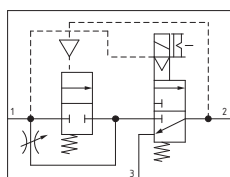


Progressive start-up valve



- ▶ 3 way valve with double poppet
- ▶ Aluminium body
- ▶ Possibility to adjust the down stream circuit filling time by the enclosed adjustable metering screw
- ▶ Quick down stream circuit discharge
- ▶ Possibility for a pneumatic or electric piloting control
- ▶ Atex certification (II 2GD o II 3GD) on request



Technical characteristics

Size	Size 1	Size 2	Size 3	Size 4
Body and connections type	Aluminium body, integrated aluminium connections			
IN / OUT connections	G1/4"	G3/8"	G1/2"	G1"
Discharge connections	G1/8"	G1/4"	G3/8"	G3/4"
Assembly configuration	Stand alone Panel mounted with M4 screws	Stand alone Panel mounted with M5 screws	Stand alone Panel mounted with M6 screws	Stand alone Panel mounted with M8 screws
Assembly position	Indifferent			
Max. fittings torque IN / OUT connections	G1/4" metal: 20	G3/8" metal: 25	G1/2" metal: 30	G1" metal: 35

Operational characteristics

Operational characteristics				
Size	Size 1	Size 2	Size 3	Size 4
Maximum working pressure (bar)	10			
Minimum working pressure (bar)	2,5			
Nominal flow rate at 6 bar with Δp=1 (NI/min)	1000	1700	2500	8000
Flow with adjustable metering screw fully open (NI/min)	150	340		3000
Working temperature (°C)	-5 ... +50			

Weights

Size	Size 1	Size 2	Size 3	Size 4
Aluminium body version (g)	365	595	1010	2300

Order codes

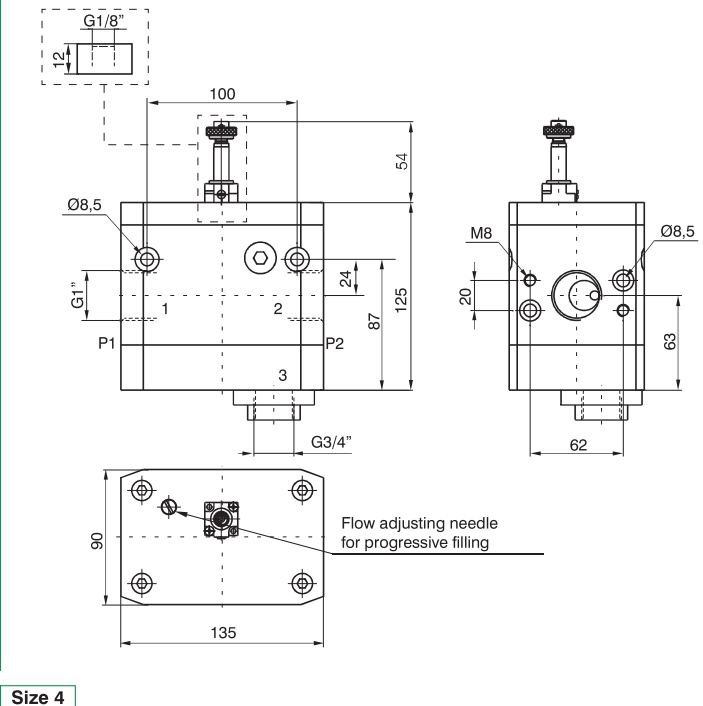
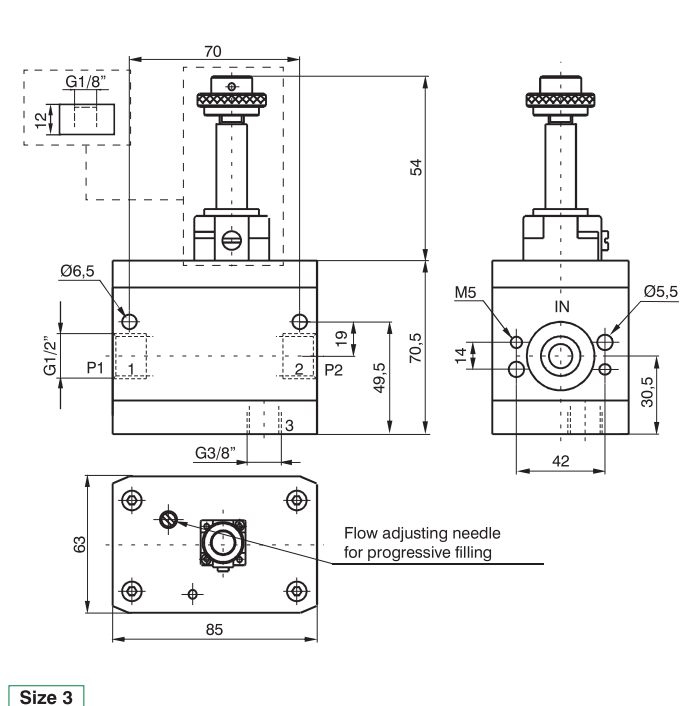
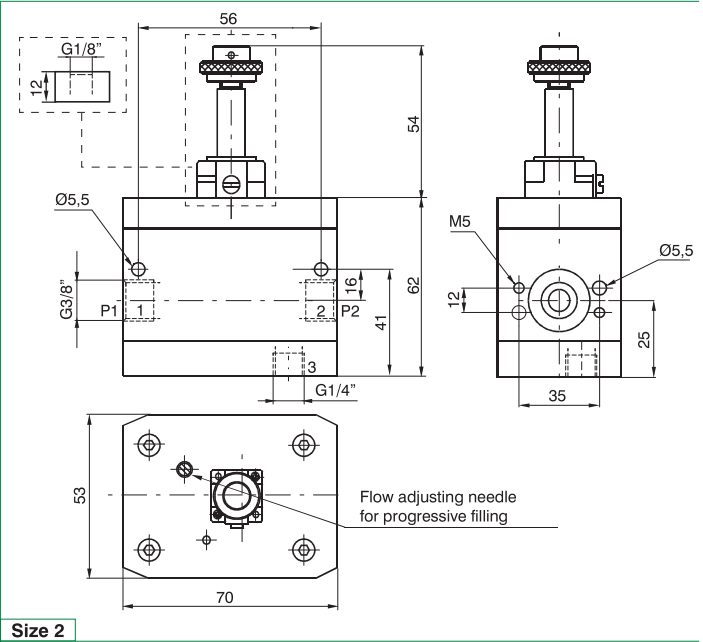
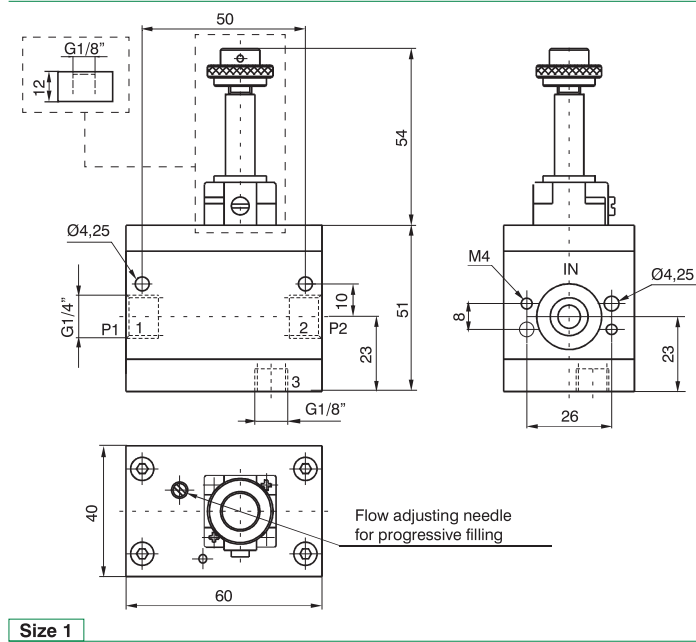
17 3 20

Size, body and connections	
1	Aluminium body, connections G1/4" (only for size 1)
2	Aluminium body, connections G3/8" (only for size 2)
3	Aluminium body, connections G1/2" (only for size 3)
4	Aluminium body, connections G1" (only for size 4)
Type	
10.M2	Electric control complete with M2 mechanic
20	Pneumatic pilot

Example: 17320

Progressive start-up valve Size 3, Aluminium body, G1/2" connections, with pneumatic pilot

Dimensions



2

AIR TREATMENT