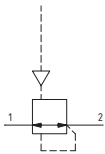


▶ **Piloted pressure regulators**



- ▶ Diaphragm piloted pressure regulator
- ▶ Available in 3 sizes with flow rates up to 3500 NI/min and connections from 1/4" a 1"
- ▶ Atex certification (II 2GD o II 3GD) on request



Note
Always regulate the rising pressure.

Technical characteristics			
Size	Size 2	Size 3	Size 4
Body and connections type	Aluminium body, integrated aluminium connections		
IN / OUT connections	G1/4" - G3/8"	G3/8" - G1/2"	G1"
Assembly configuration	Stand alone Panel mounted with M5 screws	Stand alone Panel mounted with M5 screws	Stand alone Panel mounted with M8 screws
Assembly position	Indifferent		
Pressure range (bar)	0,5...10		
Regulation	Pneumatic piloting		
Pressure measurement	G1/8" Pressure gauge connection port		
Max. fittings torque IN / OUT connections	G1/4" metal: 20 G3/8" metal: 25	G3/8" metal: 25 G1/2" metal: 30	G1" metal: 35

Operational characteristics			
Size	Size 2	Size 3	Size 4
Maximum working pressure (bar)	13		
Minimum working pressure (bar)	0,5		
Pilot pressure range (bar)	0,5...10		
Working temperature (°C)	-5 ... +50		

Weights			
Size	Size 2	Size 3	Size 4
Aluminium body version (g)	313	510	1638

Order codes

17 302A . P . L

Size, body and connections	
202A	Aluminium body, connections G1/4" (only for size 2)
202B	Aluminium body, connections G3/8" (only for size 2)
302A	Aluminium body, connections G3/8" (only for size 3)
302B	Aluminium body, connections G1/2" (only for size 3)
402NB	Aluminium body, connections G1" (only for size 4)

Options	
	Standard
L	Without relieving (not available for Size 4)

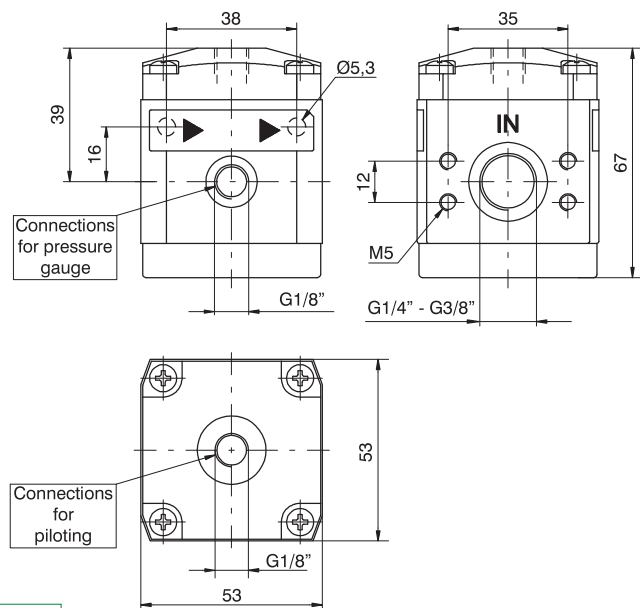
Example: 17302A.PL

Size 3 piloted pressure regulator, aluminium body, G3/8" connections, without relieving

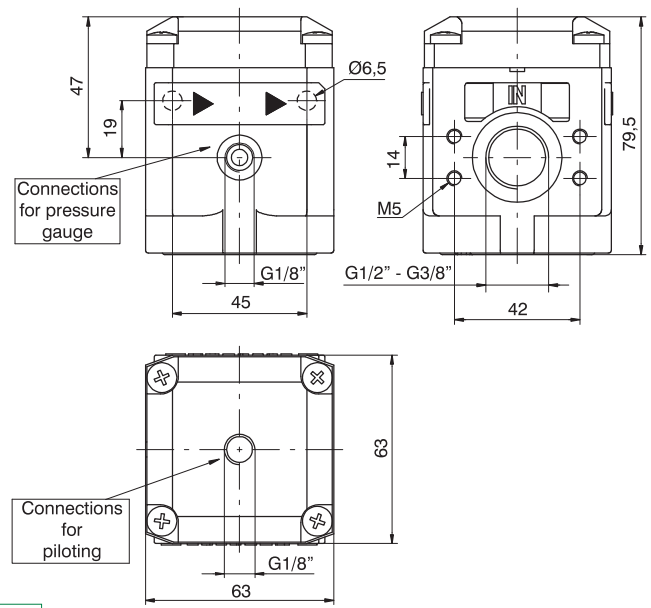
2

Dimensions

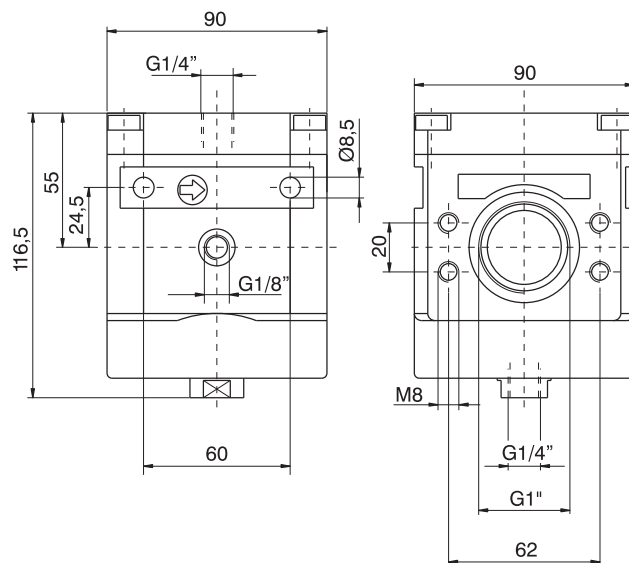
AIR TREATMENT



Size 2



Size 3

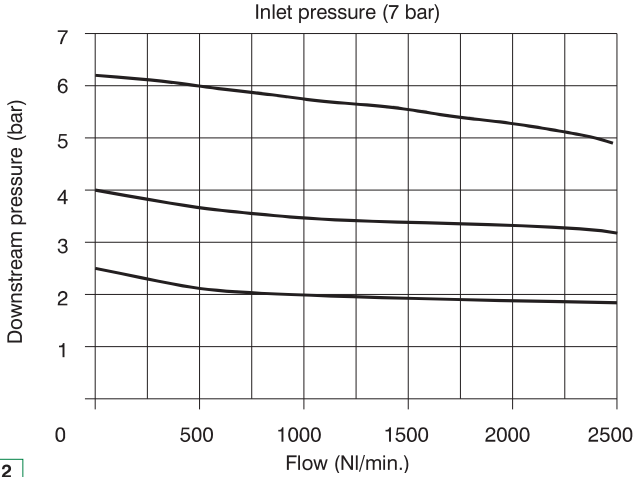


Size 4



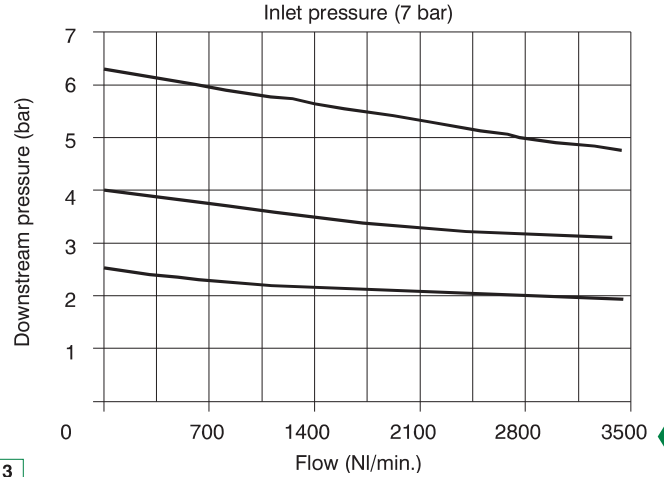
Characteristic curves

Flow rate curves



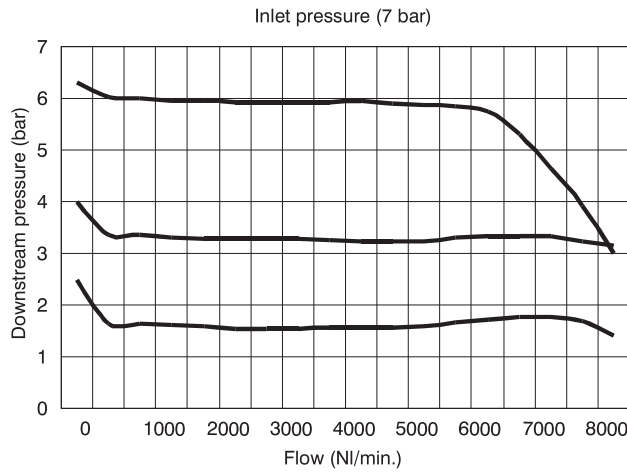
Size 2

Flow rate curves



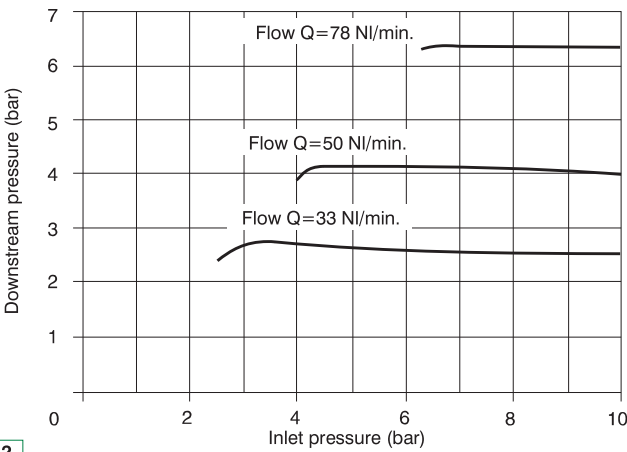
Size 3

Flow rate curves



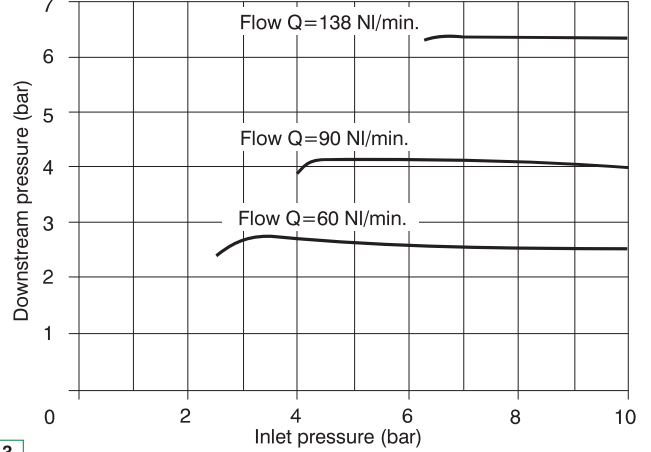
Size 4

Adjustment characteristic



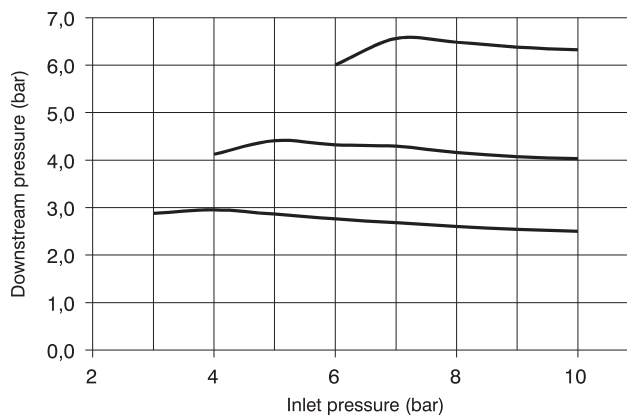
Size 2

Adjustment characteristic



Size 3

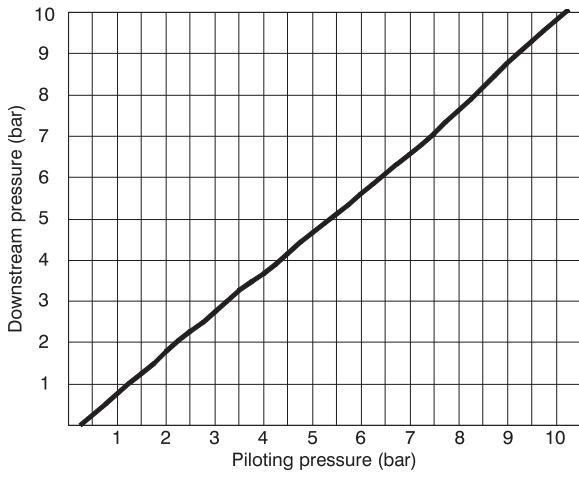
Adjustment characteristic



Size 4

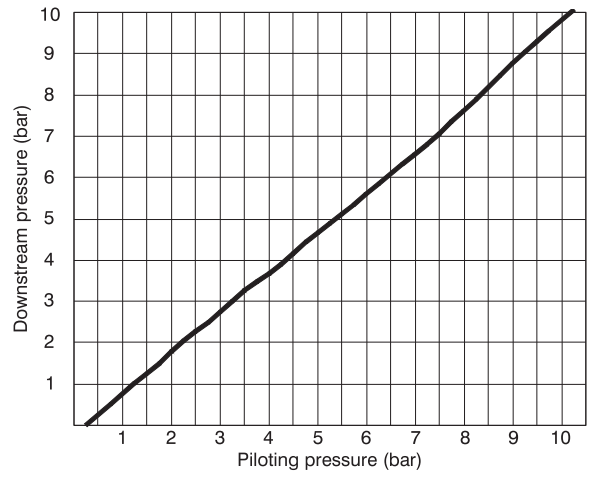


Piloting curves



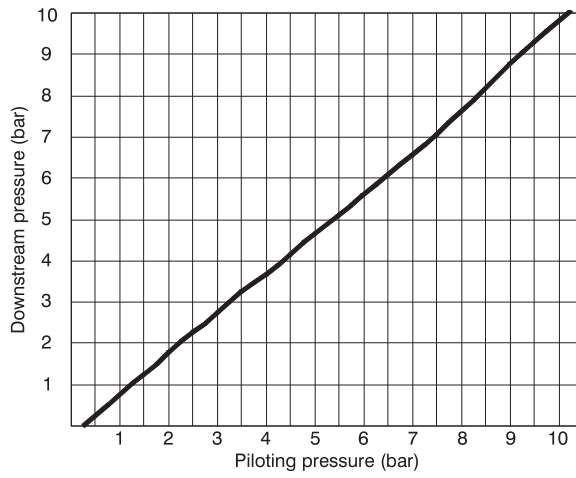
Size 2

Piloting curves



Size 3

Piloting curves



Size 4