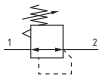


Regulators



- ▶ Diaphragm pressure regulator with relieving
- ▶ Available in 4 sizes with flow rates up to 8000 NI/min and connections from 1/8" to 1"
- ▶ Low hysteresis rolling diaphragm and balanced spool
- ▶ Available in four pressure ranges up to 12 bar
- ▶ Fitted with panel mounting locking ring
- ▶ High flow rate of the discharge valve for the downstream overpressure (Size 4)
- ▶ Atex certification (II 2GD o II 3GD) on request

**Note**

For installations where a more accurate and constant pressure is required, the unit should be installed as close as possible to the point of use.

2

AIR TREATMENT

| Technical characteristics | | | | |
|--|---|--|--|---|
| Size | Size 1 | Size 2 | Size 3 | Size 4 |
| Body and connections type | Zinc alloy body, Zinc alloy integrated connections Technopolymer body, metal connections | Aluminium body, integrated aluminium connections | | |
| IN / OUT connections | G1/8" - G1/4" | G1/4" - G3/8" | G3/8" - G1/2", G3/4" | G1" |
| Assembly configuration | Stand alone Panel mounting Panel mounted with M4 screws With fixing bracket | Stand alone Panel mounting Panel mounted with M5 screws With fixing bracket | Stand alone Panel mounting Panel mounted with M6 screws With fixing bracket | Stand alone Panel mounting Panel mounted with M8 screws |
| Assembly position | Indifferent | | | |
| Pressure range (bar) | 0 - 2 / 0 - 4 / 0 - 8 / 0 - 12 | | | |
| Regulation | Manual push and lock with pressure Manual lockable with accessories | | | |
| Pressure measurement | G1/8" Pressure gauge connection port | | | |
| Max. fittings torque IN / OUT connections | G1/8" metal: 15 G1/4" metal: 20 | G1/4" metal: 20 G3/8" metal: 25 | G3/8" metal: 25 G1/2" metal: 30 G3/4" metal: 35 | G1" metal: 35 |

| Operational characteristics | | | | |
|--------------------------------|------------|--------|--------|--------|
| Size | Size 1 | Size 2 | Size 3 | Size 4 |
| Maximum working pressure (bar) | 13 | | | |
| Minimum working pressure (bar) | 0,5 | | | |
| Working temperature (°C) | -5 ... +50 | | | |

| Weights | | | | |
|--------------------------------|--------|--------|--------|--------|
| Size | Size 1 | Size 2 | Size 3 | Size 4 |
| Zinc alloy body version (g) | 250 | / | / | / |
| Technopolymer body version (g) | 135 | / | / | / |
| Aluminium body version (g) | / | 390 | 550 | 1900 |



Order codes

17 302A . D . L . K

Size, body and connections

| | |
|-------|---|
| 002A | Zinc alloy body, connections G1/8" (only for size 1) |
| 002B | Zinc alloy body, connections G1/4" (only for size 1) |
| 102A | Technopolymer body, connections G1/8" (only for size 1) |
| 102B | Technopolymer body, connections G1/4" (only for size 1) |
| 202A | Aluminium body, connections G1/4" (only for size 2) |
| 202B | Aluminium body, connections G3/8" (only for size 2) |
| 302A | Aluminium body, connections G3/8" (only for size 3) |
| 302B | Aluminium body, connections G1/2" (only for size 3) |
| 302E | Aluminium body, connections G3/4" (only for size 3) |
| 402NB | Aluminium body, connections G1" (only for size 4) |

Pressure range

| | |
|---|------------|
| A | 0 - 2 bar |
| B | 0 - 4 bar |
| C | 0 - 8 bar |
| D | 0 - 12 bar |

Type

| | |
|----|---|
| L | Without relieving |
| SM | Improved relieving (not available for Size 4) |

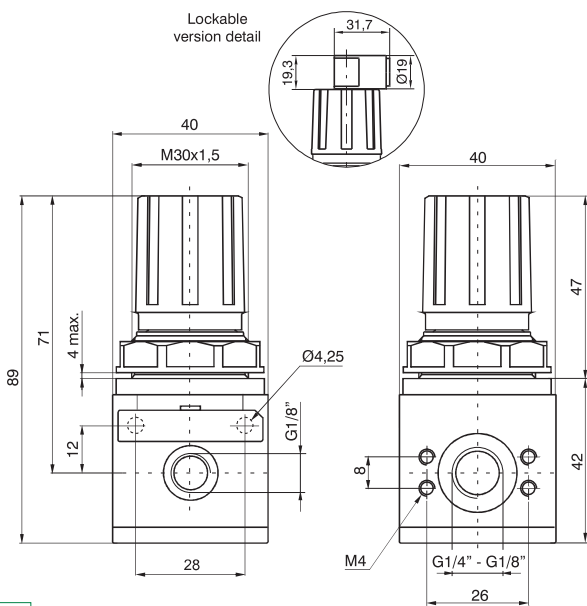
Options

| | |
|----|-------------------------------------|
| | Standard |
| K | Lockable version |
| KF | Lockable version with universal key |

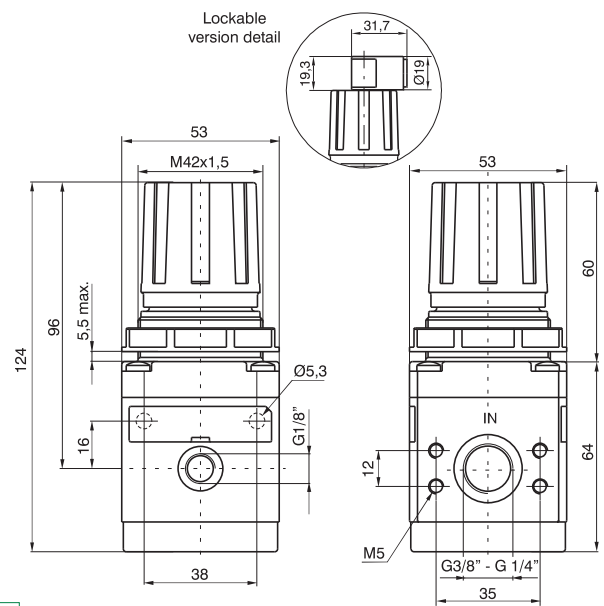
Example: 17302A.D.L.K

Regulator size 3, body in light aluminium alloy, G3/8"connections, 0 - 12 bar, without relieving, lockable version

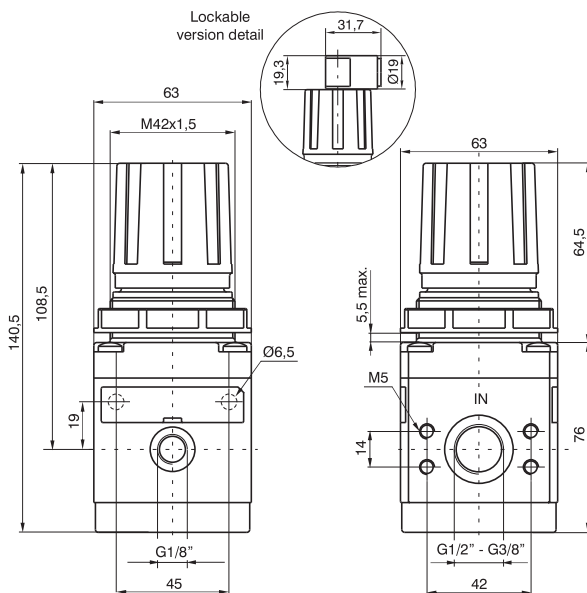
Dimensions



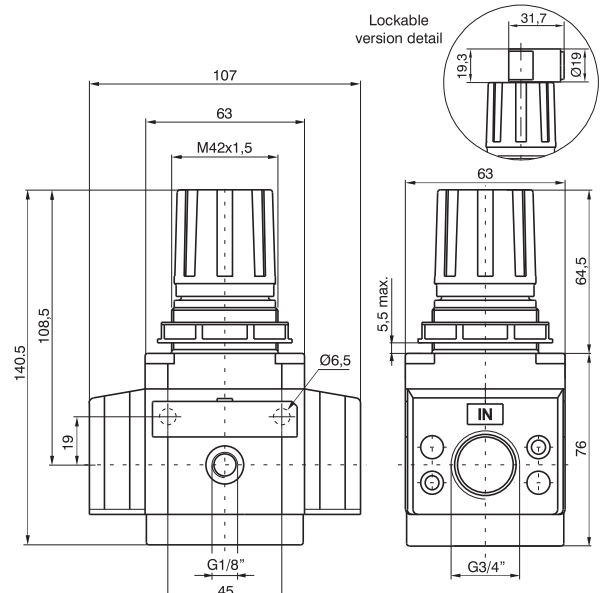
Size 1



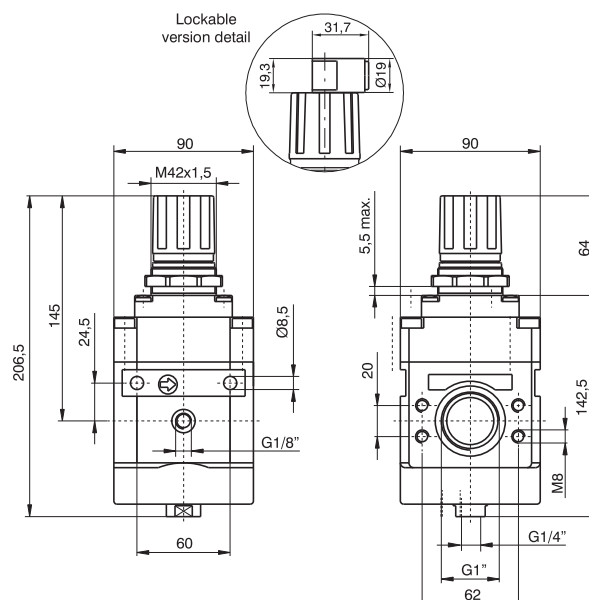
Size 2



Size 3



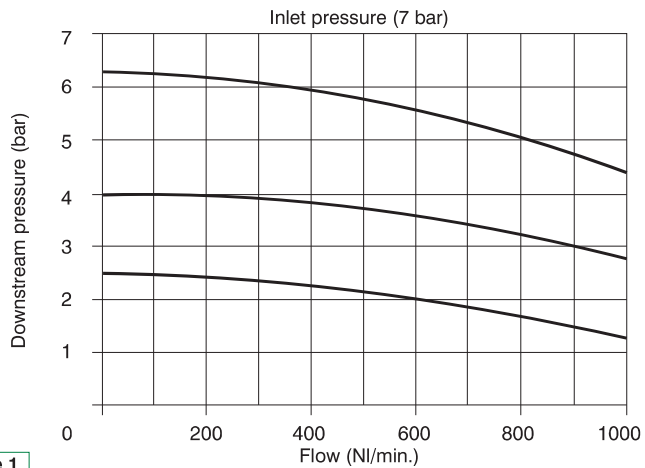
Size 3 3/4"



Size 4

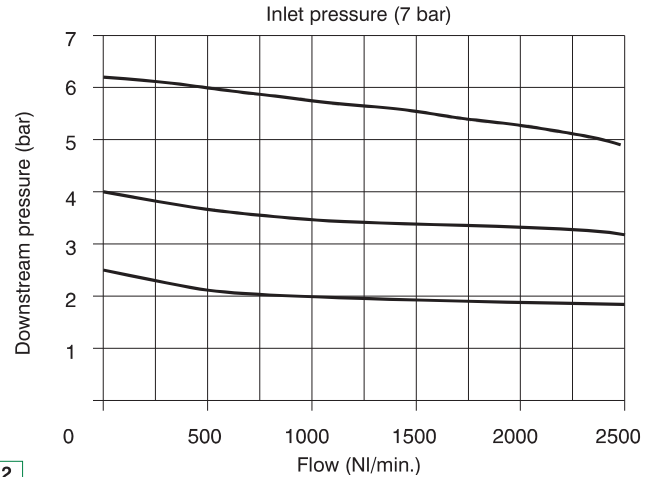
Characteristic curves

Flow rate curves



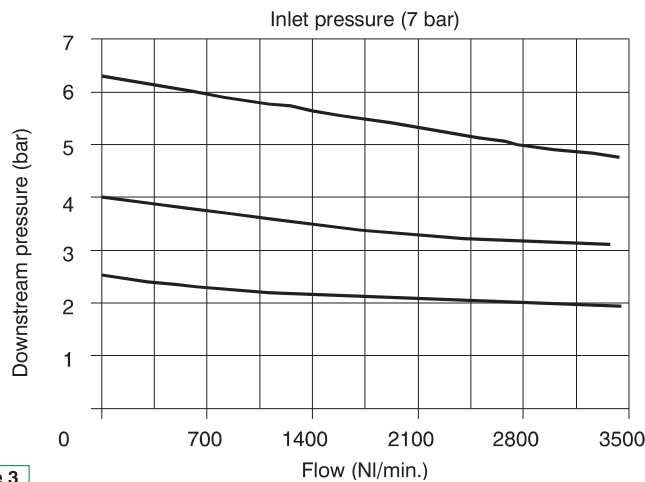
Size 1

Flow rate curves



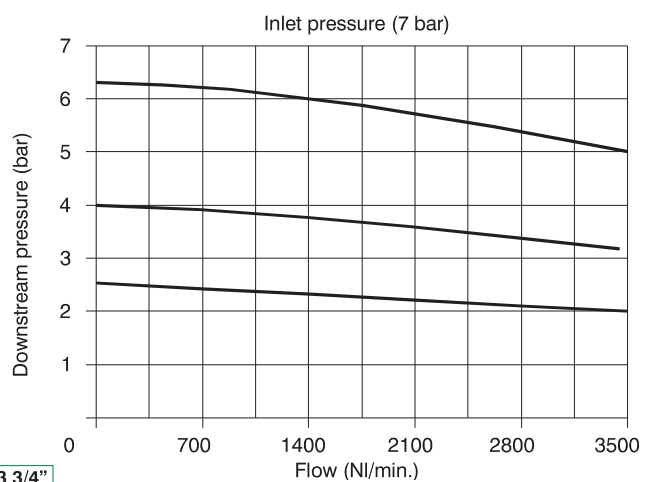
Size 2

Flow rate curves



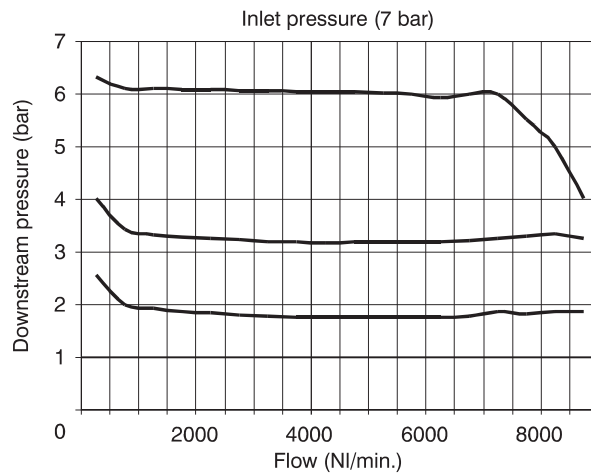
Size 3

Flow rate curves



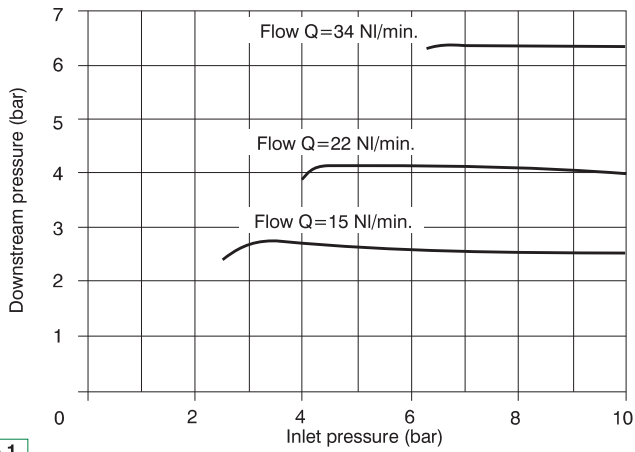
Size 3 3/4"

Flow rate curves



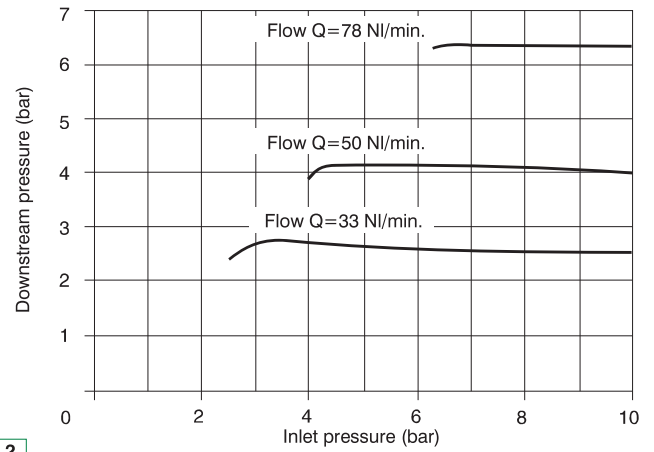
Size 4

Adjustment characteristic



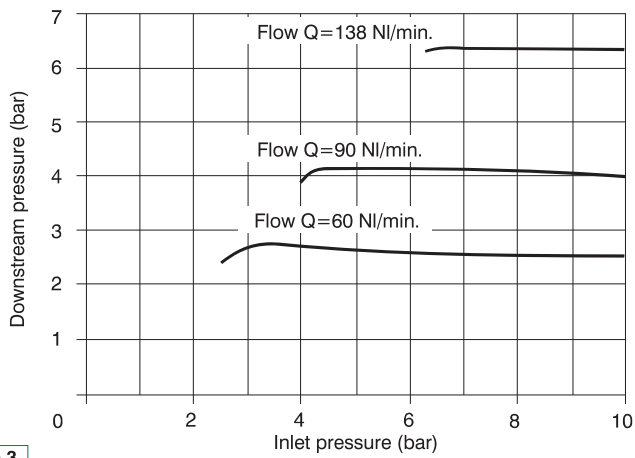
Size 1

Adjustment characteristic



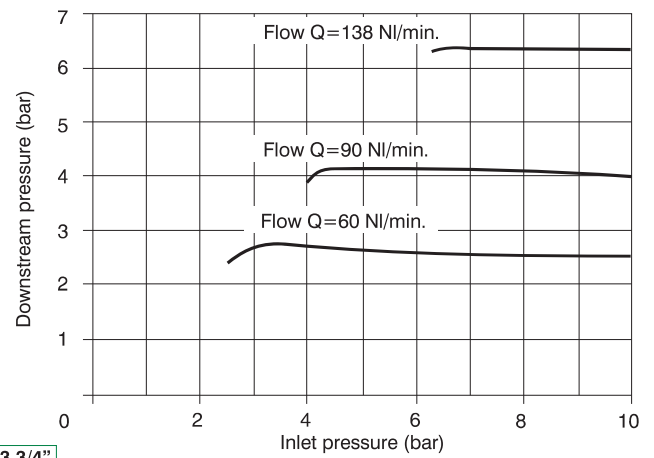
Size 2

Adjustment characteristic



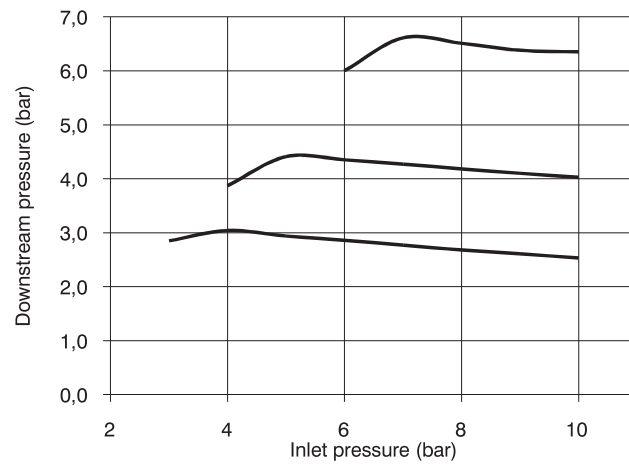
Size 3

Adjustment characteristic



Size 3 3/4"

Adjustment characteristic



Size 4