



## Pressure Switch complete with adapter



- ▶ The pressure switch can be set at desired pressure from 2 to 10 bar with electrical connection applied
- ▶ The electrical connection is made by mean of a 15 mm connector DIN 43650 type C
- ▶ The microswitch contact could be Normally Closed or open (change over switch)

2

AIR TREATMENT



Technical characteristics				
Size	Size 1	Size 2	Size 3	Size 4
Body and connections type	Aluminium body			
IN / OUT Connections	G1/8"	G3/8"	G1/2"	Ø36
Assembly configuration	Stand alone	Stand alone	Stand alone	Stand alone
Assembly position	Indifferent			
Microswitch capacity (A)	1			
Microswitch Maximum voltage (VAC)	250			
Grade of protection	IP65 (with connector assembled)			

Operational characteristics				
Size	Size 1	Size 2	Size 3	Size 4
Maximum working pressure (bar)	13			
Working temperature (°C)	-5 ... +50			
Pressure range (bar)	2 ... 10			

Weights				
Size	Size 1	Size 2	Size 3	Size 4
Aluminium body version (g)	160	200	220	450

### Order codes

17 **34C**

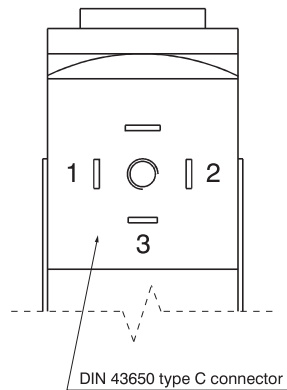
Type	
14A	Pressure switch adapter (only for size 1)
14B	Pressure switch (for all sizes)
14C	Pressure switch complete with adapter (only for size 1)
24A	Pressure switch adapter (only for size 2)
24C	Pressure switch complete with adapter (only for size 2)
34A	Pressure switch adapter (only for size 3)
34C	Pressure switch complete with adapter (only for size 3)
44A	Pressure switch adapter (only for size 4)
44C	Pressure switch complete with adapter (only for size 4)

### Example: 1734C

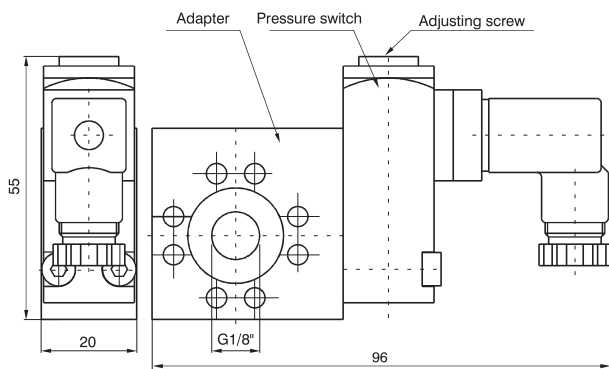
Pressure switch adapter size 3

## Electrical connection

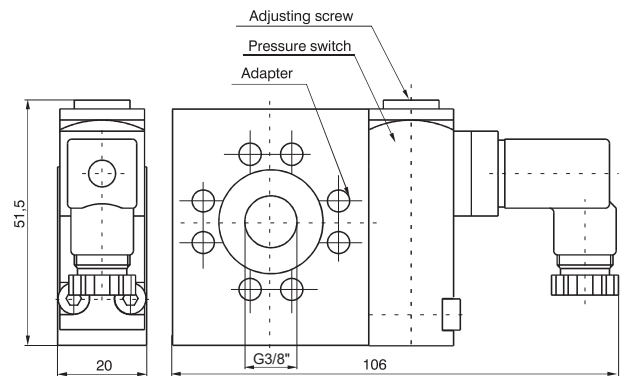
1 = neutral  
2 = N.C. contact  
3 = N.O. contact



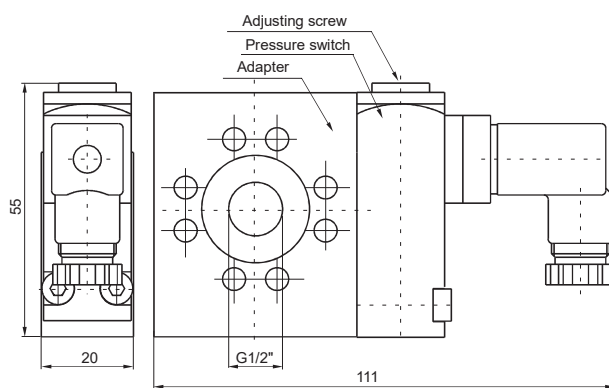
## Dimensions



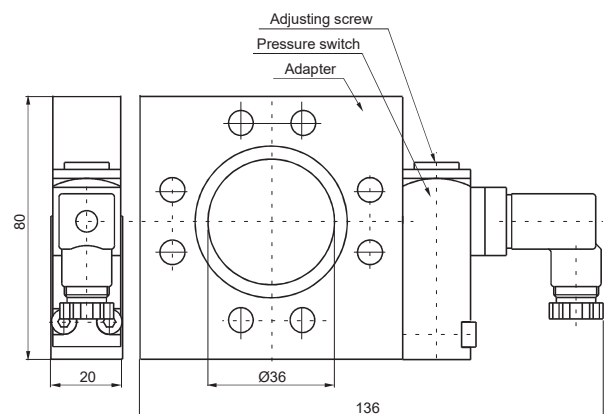
Size 1



Size 2



Size 3



Size 4