



Series 1100 - Modular bases with side and bottom connections

These bases are manufactured with the outlet and pilot ports on both the sides and the bottom faces giving the option for use with any application. Unused ports must be blanked off using threaded plugs which are not included in the part number or price. To isolate bases from each other for use with different supply pressures ports 1, 3 & 5 should be plugged underneath the seal. The codes are:
1101.17 (size 1)-1102.17 (size 2)-1103.17 (size 3)

1

AIR DISTRIBUTION



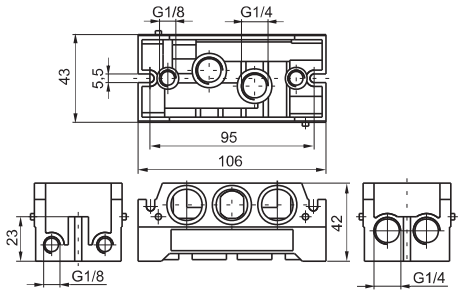
Modular bases

Coding: 110**T**.00

SIZE
1 = Size 1
2 = Size 2
3 = Size 3

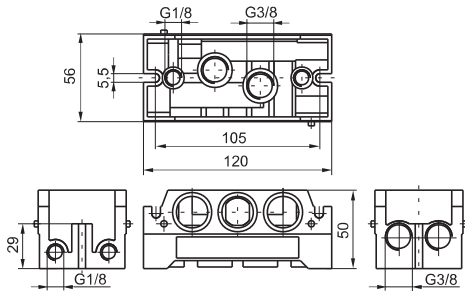
Weight 240 g

1101.00



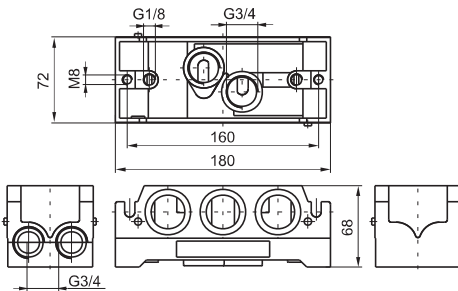
Weight 340 g

1102.00



Weight 950 g

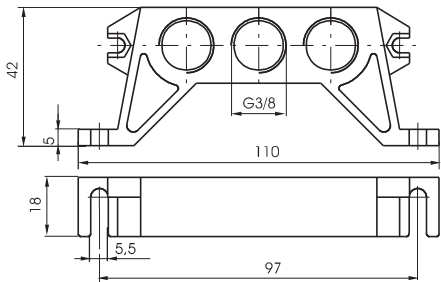
1103.00



Inlet blocks, Size 1

Coding: 1101.09

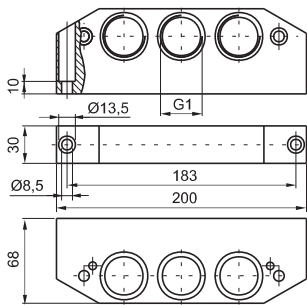
Weight 100 g



Inlet blocks, Size 3

Coding: 1103.11

Weight 840 g



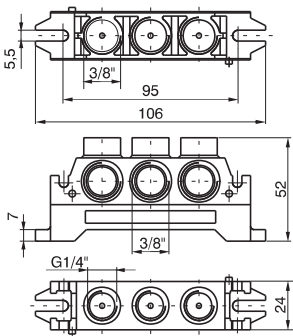


Inlet blocks



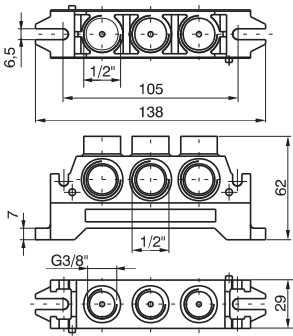
Weight 160 g

1101.**N**



Weight 230 g

1102.**N**



Coding: 110**T.N**

	SIZE
T	1 = Size 1
	2 = Size 2
	CONNECTIONS
N	10 = Universal
	11 = Stand alone
	12 = Top connections
	13 = Bottom connections



Single use bases

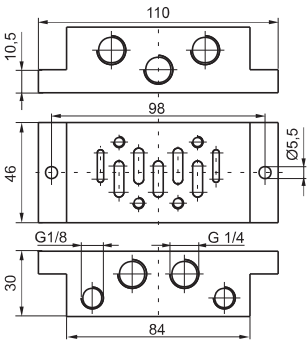
Coding: 110T.F

T	SIZE
	1 = Size 1
	2 = Size 2
	3 = Size 3
F	SHAPE
	14 = Shape A
	15 = Shape B (only for sizes 1 & 2)



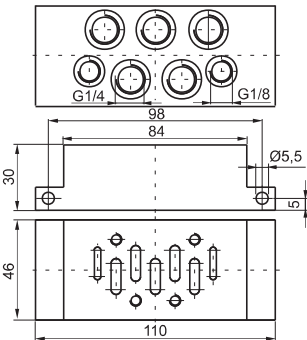
Weight 160 g

1101.14



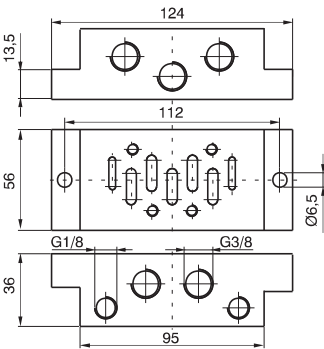
Weight 190 g

1101.15



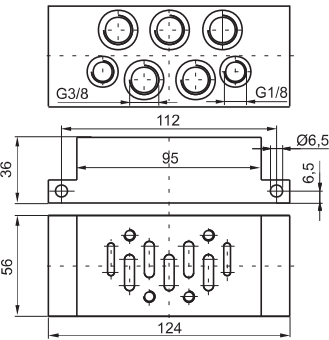
Weight 190 g

1102.14



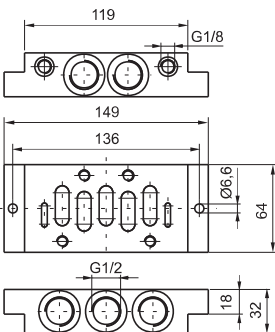
Weight 220 g

1102.15



Weight 600 g

1103.14





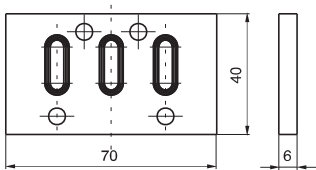
Closing plate

Coding: 110**T**.16

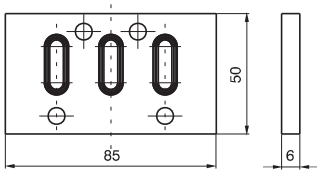
T	SIZE
	1 = Size 1
	2 = Size 2
	3 = Size 3



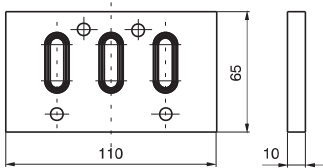
1101.16



1102.16



1103.16



Base adaptor

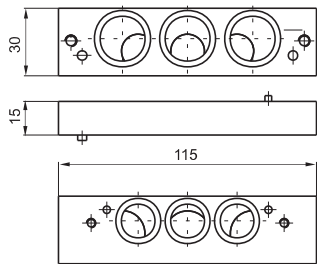
Coding: 1100.**T**

T	SIZE
	2-1 = Sizes 1 and 2
	3-2 = Sizes 2 and 3



Weight 110 g

1100.2-1



Weight 590 g

1100.3-2

