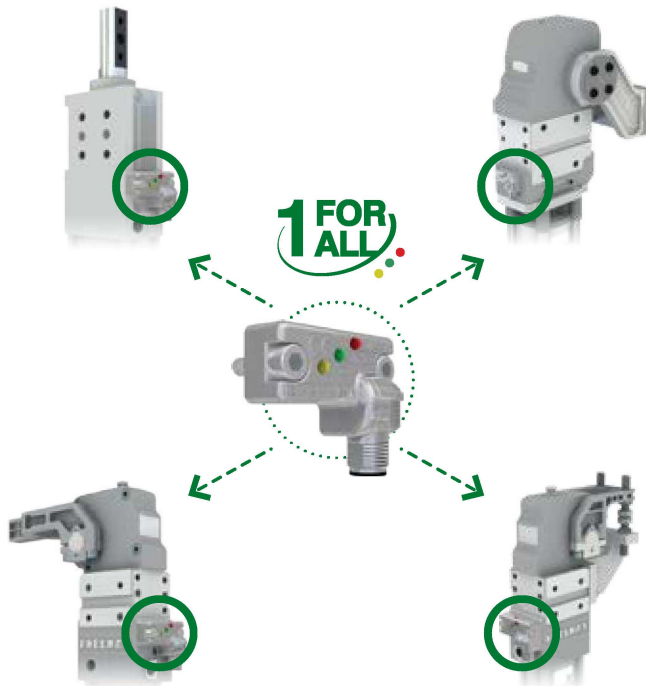


# Sensor

## ES001. Electronic sensor used for all clamps, all sizes and series

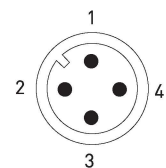
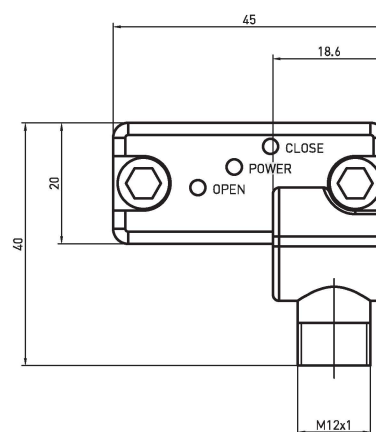
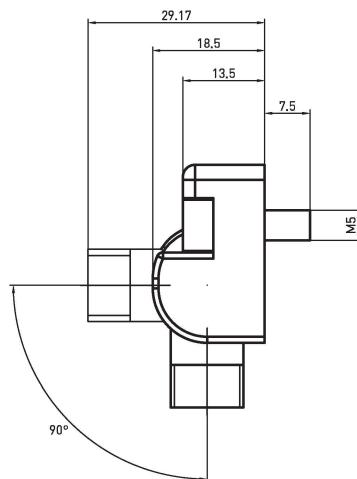


### Technical features

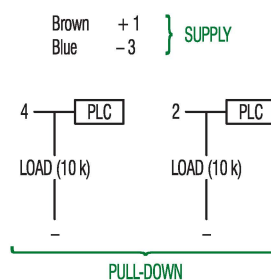
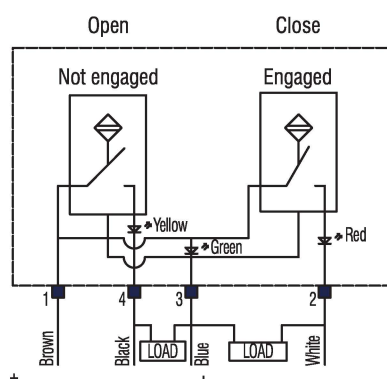
Operating voltage	10-30 VDC
Voltage drop	≤ 2 V
Load current	≤ 100 mA
Current consumption	≤ 30 mA
Short-circuit protection	protected
Protection rating	IP68
Operating temperature	-0 °C +50 °C
Storage temperature	-25 °C +60 °C
Electromagnetic compatibility	EN 60947-5-2:2007 + A1:2012
Weld field immunity	> 100 mT
Power supply indication	green LED
Open position indication	yellow LED
Closed position indication	red LED
Digital output type	PNP

### ES001 / Electronic sensor with M12 swivel connector - PNP

REV. 00 - 31/03/2015

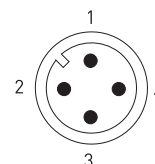
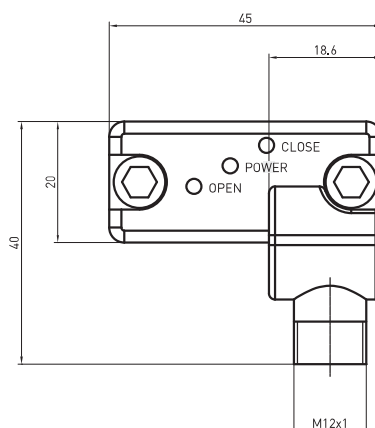
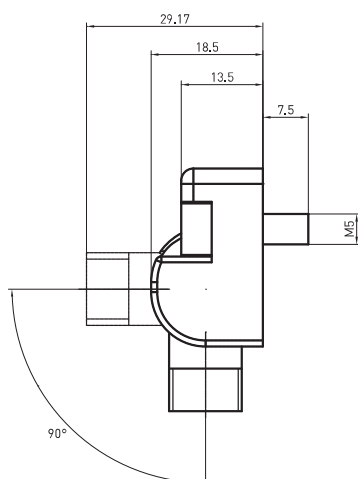


Simplified diagram (PNP)

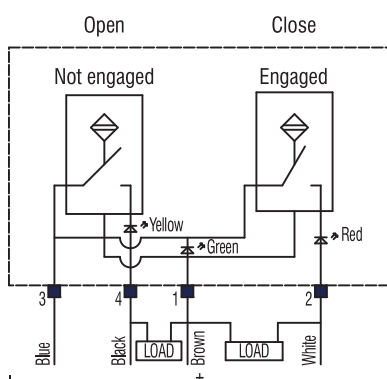


## ES002 / Electronic sensor with M12 swivel connector - NPN

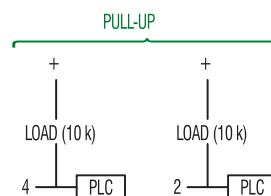
REV. 00 - 31/03/2015



Simplified diagram (NPN)

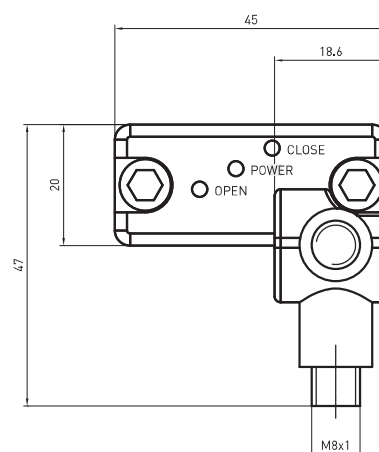
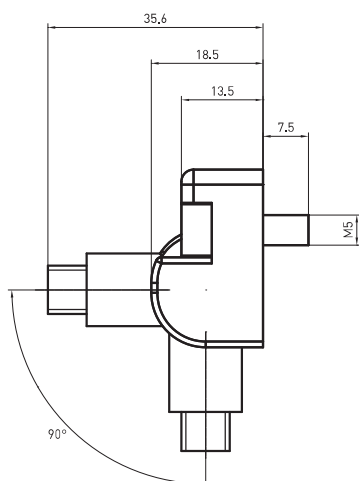


Brown +1  
Blue -3 } SUPPLY

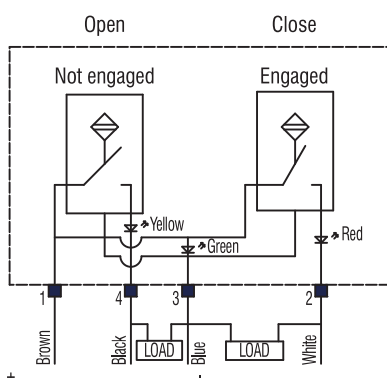


## ES003 / Electronic sensor with M8 swivel connector - PNP

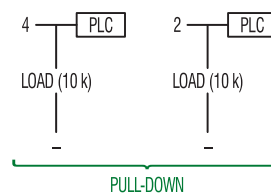
REV. 00 - 31/03/2015



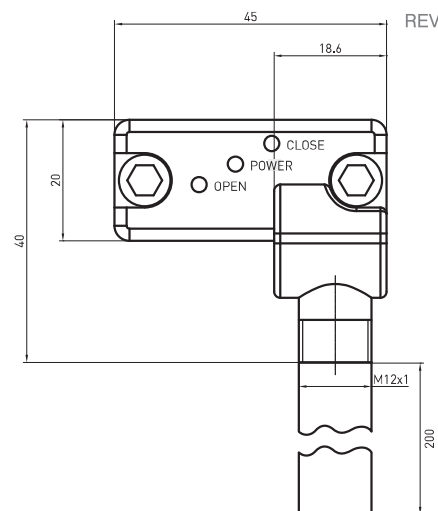
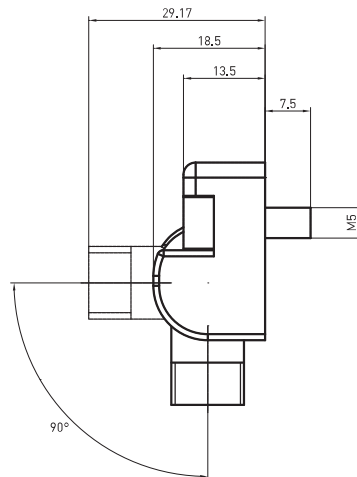
Simplified diagram (PNP)



Brown +1  
Blue -3 } SUPPLY

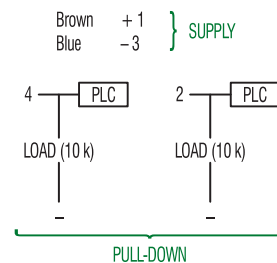
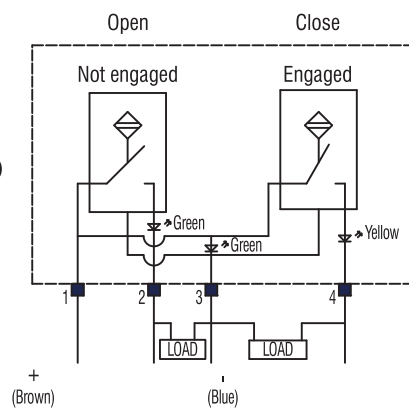


## ES004 / Electronic sensor with M12 swivel connector - PNP



REV. 00 - 12/12/2016

Simplified diagram (PNP)

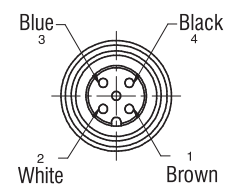
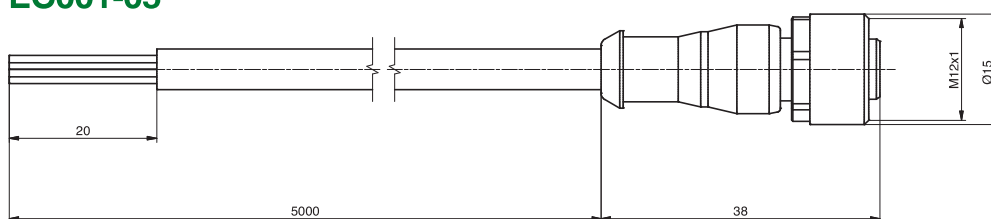


### Technical features

Power supply indication	green LED
Open position indication	green LED
Closed position indication	yellow LED

## Cable

### EC001-05



### Technical features

#### Connector features

Product type	M12 circular connector with moulded cable
Connector type	Straight 180°
Contacts type	Female 4 poles
Pin	4
Protection class	IP67
Rated voltage	250V AC/DC
Rated current	4 A

#### Cable features

Pneumax cable code	EC001-05
Numbers of conductors	4
Conductors section	0,34 mm <sup>2</sup> (AWG22)
Cable material	PUR UL style 21576
Coating colour	Black
Conductors insulation material	PP
Cable length	5000 mm
Stripping	20 mm Standard



High flex (class 6)

\* DIMENSIONAL TOLERANCE FOR DOWEL HOLES:  $\pm 0.02$   
 DIMENSIONAL TOLERANCE FOR THREADED HOLES:  $\pm 0.1$   
 REV. 00 - 03/04/2015