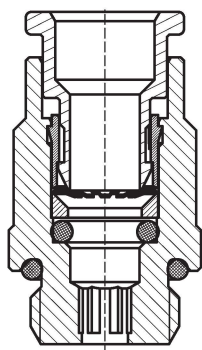


Fittings



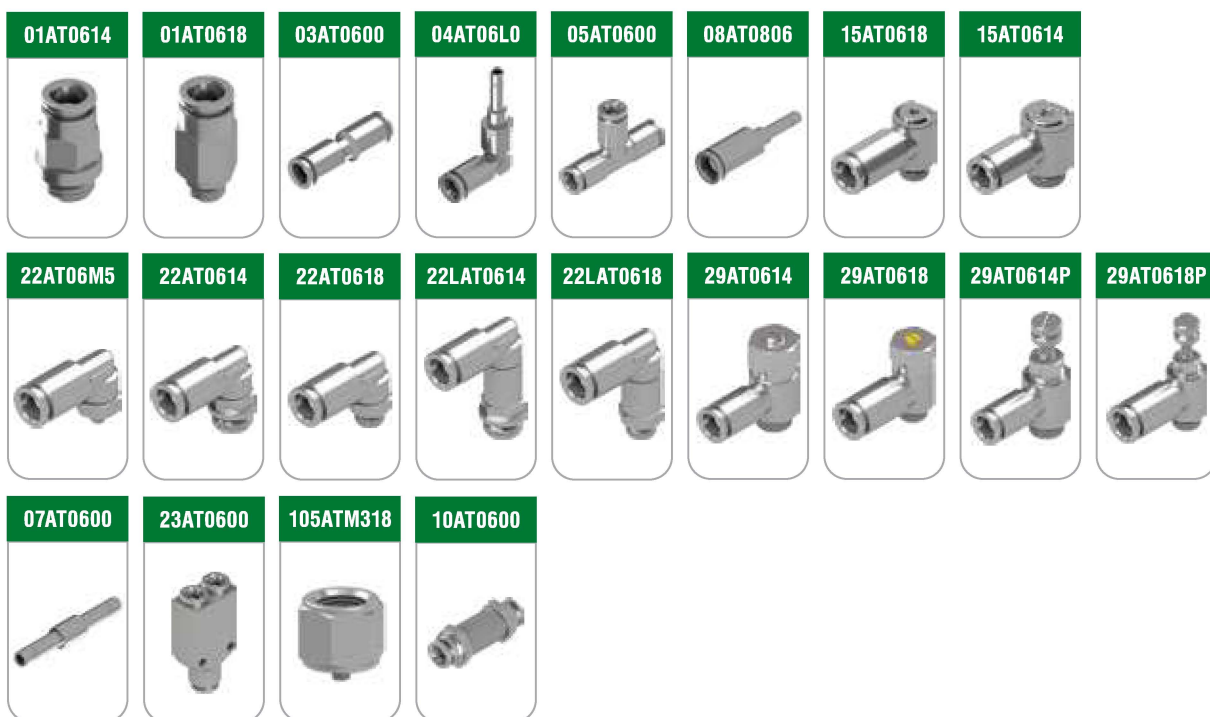
Patented



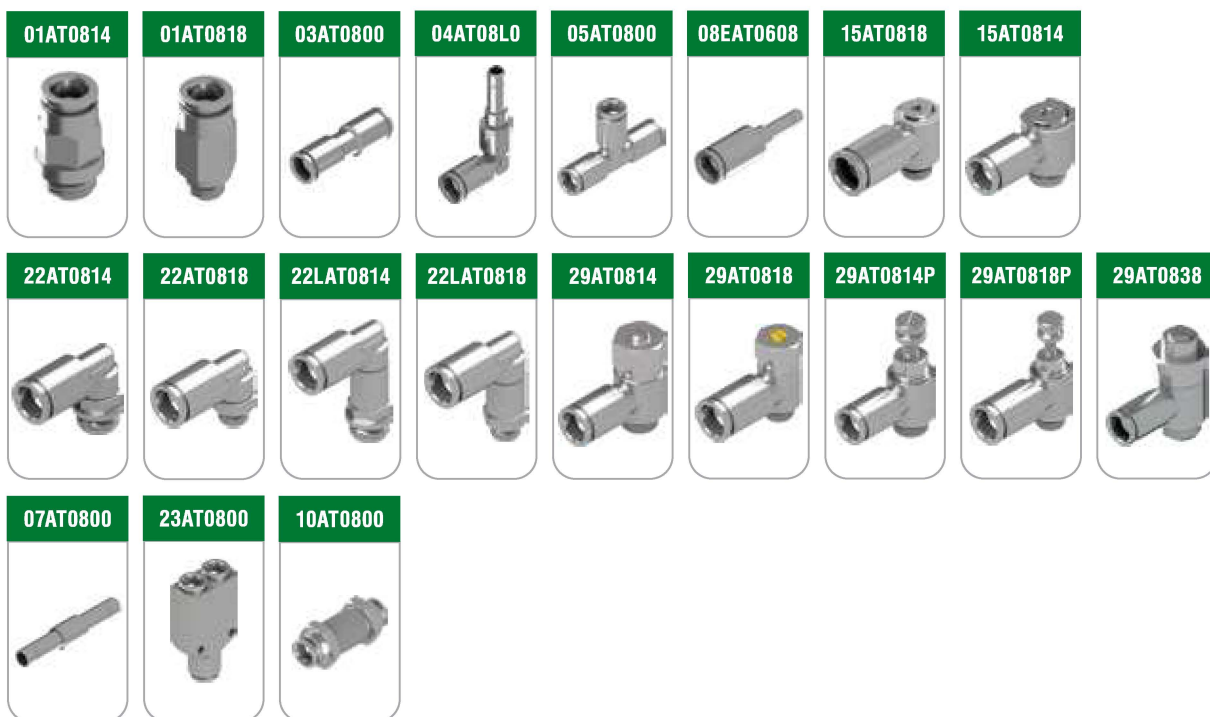
Brass push-in fittings for welding applications

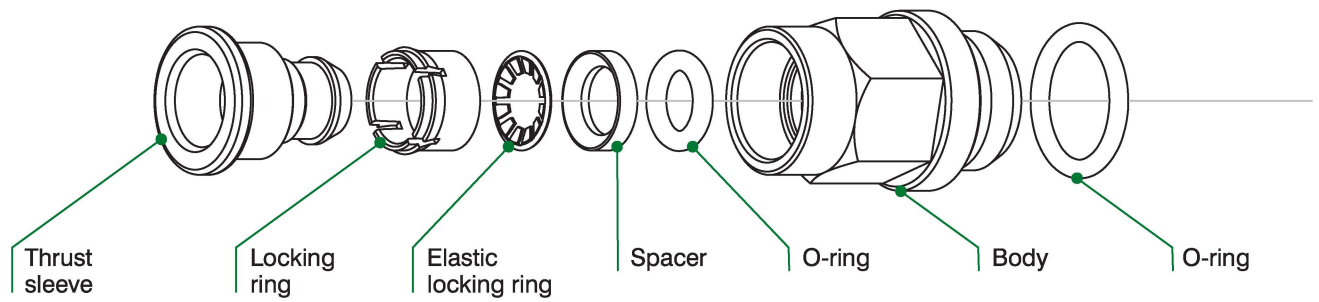
- No covers required spatter-proof
- Prolonged thrust sleeve for optimal protection of the tube against welding debris
- The internal components are optimally guided for an enhanced retaining of the tubes
- Specific for 3-layer polyurethane tube

Ø
6

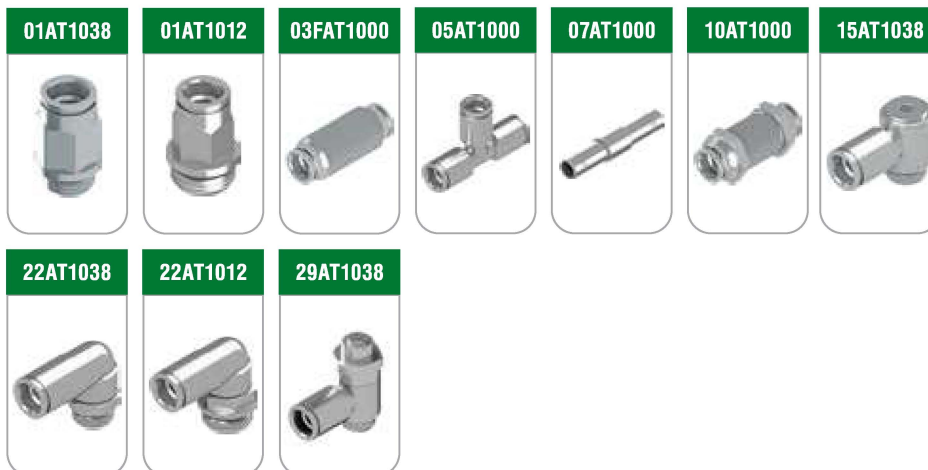


Ø
8





Ø
10



Selection of accessories



01AT0614

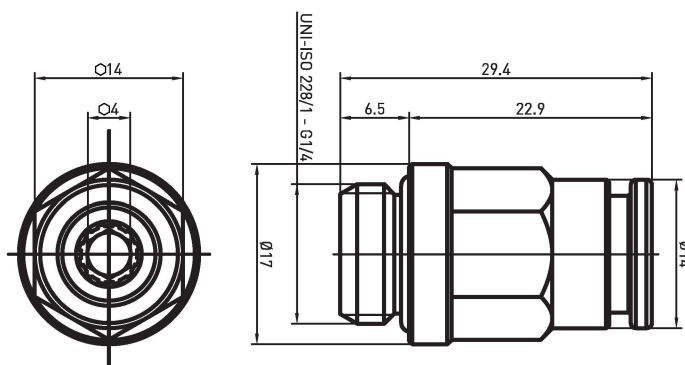
REV. 00 - 12/10/2018



Straight fitting

Ø6 G1/4"

AT Series with NBR seals



01AT0618

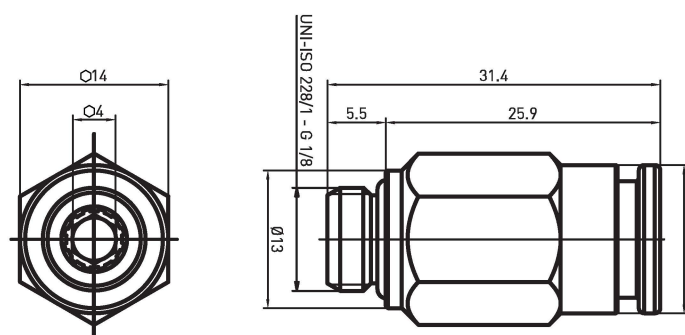
REV. 00 - 12/10/2018



Straight fitting

Ø6 G1/8"

AT Series with NBR seals



03AT0600

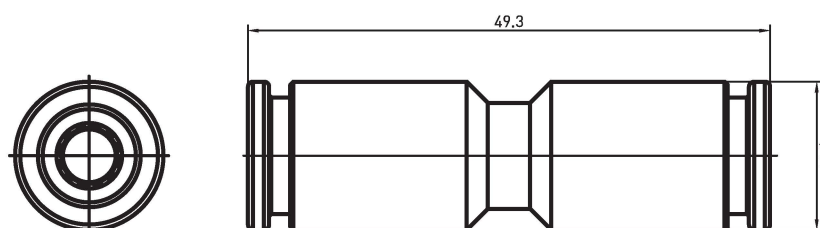
REV. 00 - 15/10/2018



Straight connector

Ø6

AT Series with NBR seals



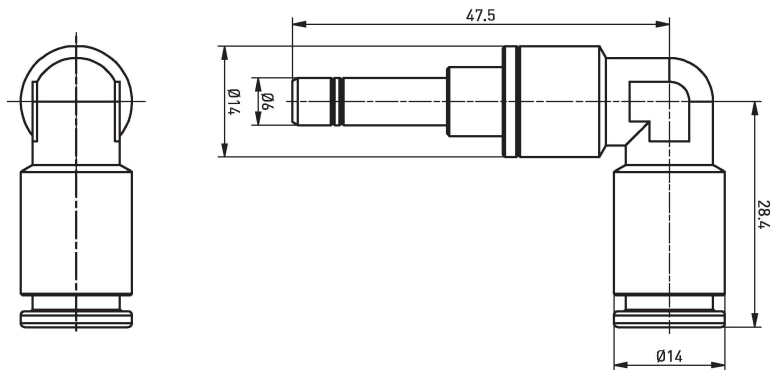
04AT06L0

REV. 00 - 15/10/2018

**Elbow connector**

Ø6

AT Series with NBR seals

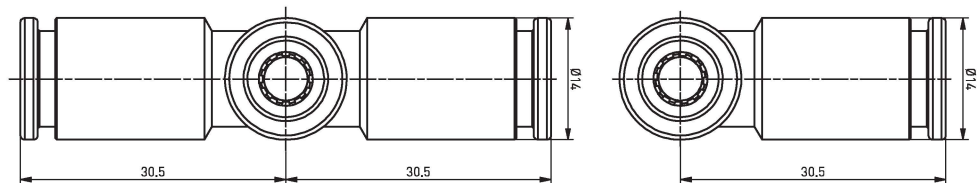
**05AT0600**

REV. 00 - 29/11/2018

**T connector**

Ø6

AT Series with NBR seals

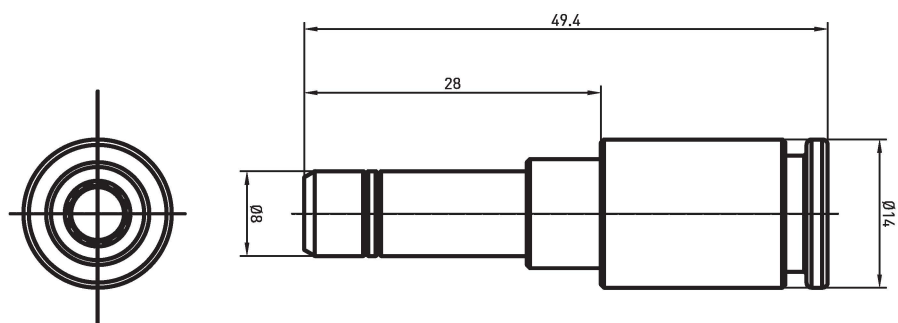
**08AT0806**

REV. 00 - 27/09/2018

**Plug-in reducer**

Ø8M Ø6F

AT Series with NBR seals



15AT0618

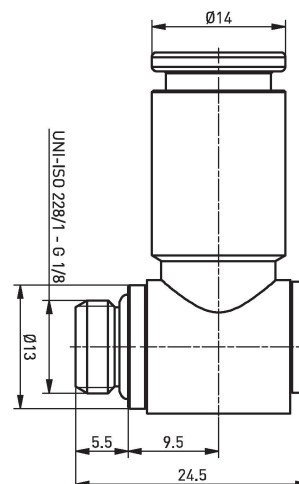
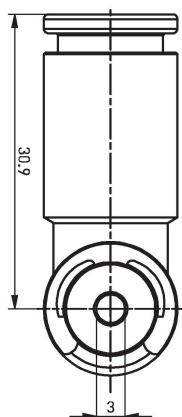
REV. 00 - 15/10/2018



Complete single banjo

Ø6 - G1/8"

AT Series with NBR seals



15AT0614

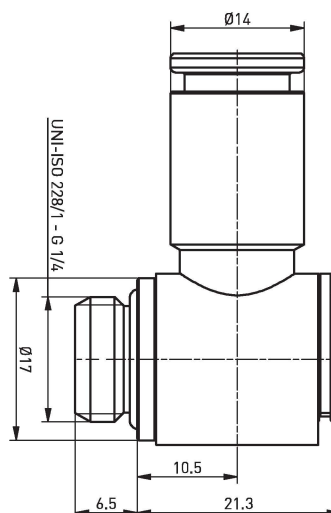
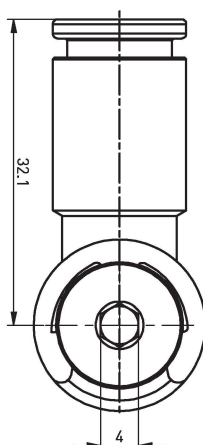
REV. 00 - 15/10/2018



Complete single banjo

Ø6 - G1/4"

AT Series with NBR seals



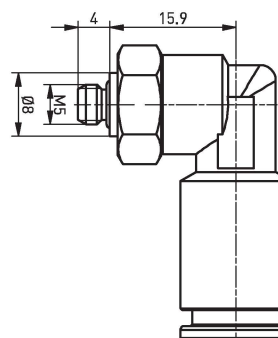
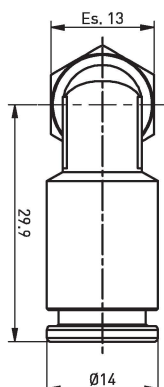
22AT06M5

REV. 00 - 29/11/2018



**Swivel elbow male
adaptor parallel**

Ø6 - M5



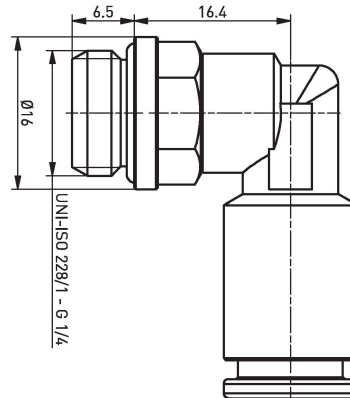
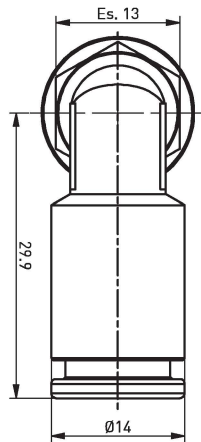
22AT0614

REV. 00 - 15/10/2018

**Swivel elbow male
adaptor parallel**

Ø6 - G1/4"

AT Series with NBR seals

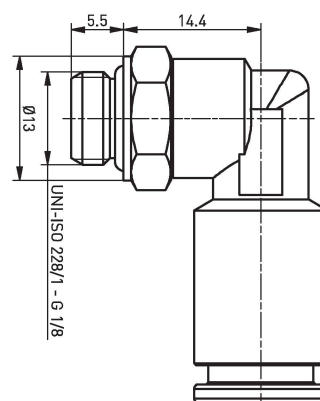
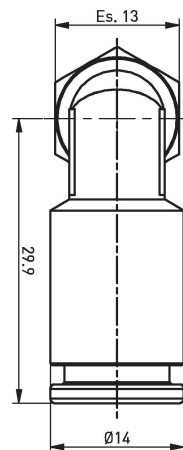
**22AT0618**

REV. 00 - 15/10/2018

**Swivel elbow male
adaptor parallel**

Ø6 - G1/8"

AT Series with NBR seals

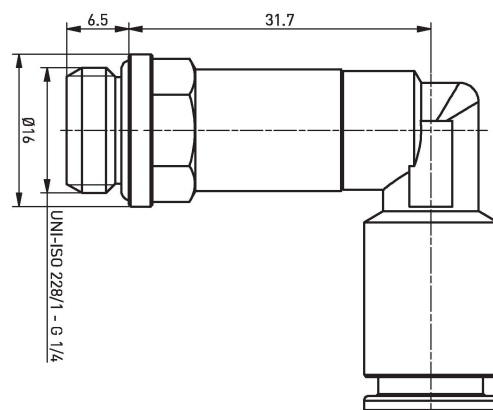
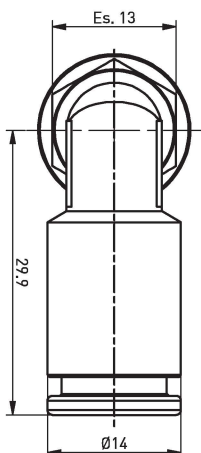
**22LAT0614**

REV. 00 - 27/09/2018

**Swivel longer elbow male
adaptor parallel**

Ø6 - G1/4"

AT Series with NBR seals



22LAT0618

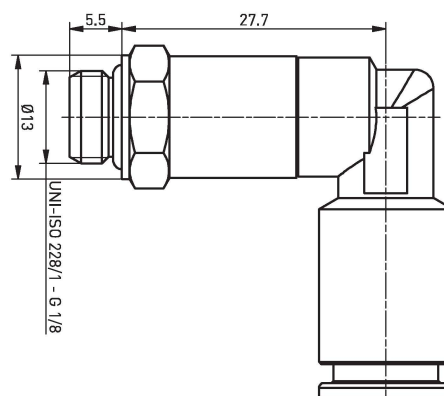
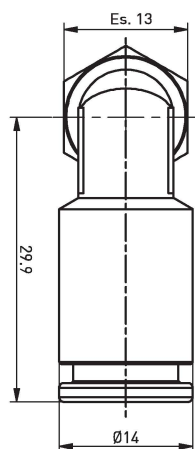
REV. 00 - 15/10/2018



**Swivel longer elbow
male adaptor parallel**

Ø6 - G1/8"

AT Series with NBR seals



29AT0614

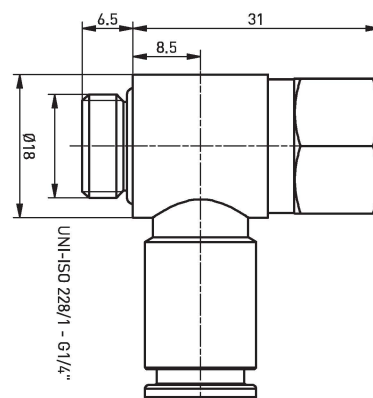
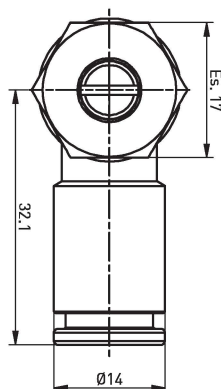
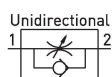
REV. 00 - 29/08/2018



Flow adjuster

Ø6 - G1/4"

AT Series with NBR seals



29AT0618

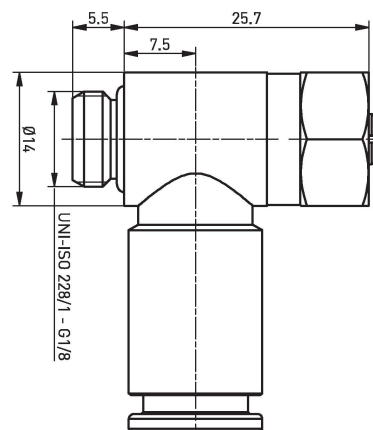
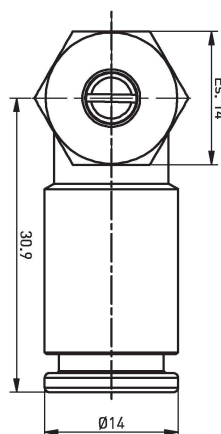
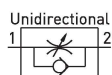
REV. 00 - 29/08/2018



Flow adjuster

Ø6 - G1/8"

AT Series with NBR seals



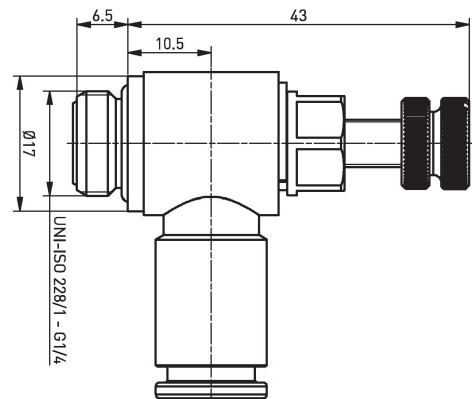
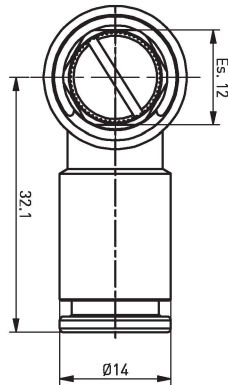
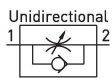
29AT0614P

REV. 00 - 11/10/2018

**Flow adjuster**

Ø6 - G1/4"

AT Series with NBR seals

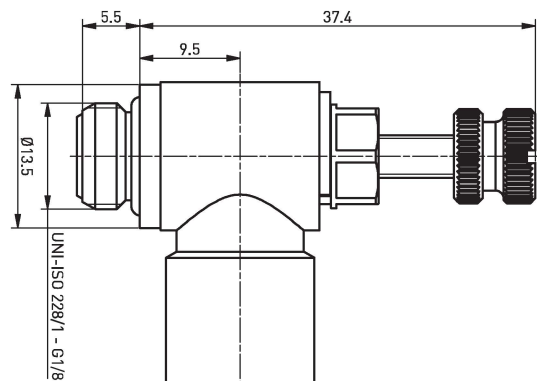
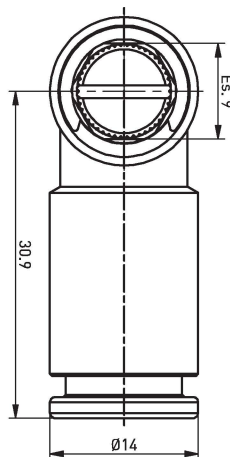
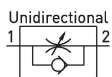
**29AT0618P**

REV. 00 - 11/10/2018

**Swivel elbow male
adaptor parallel**

Ø6 - G1/8"

AT Series with NBR seals

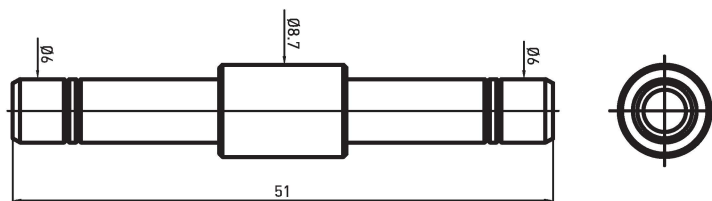
**07AT0600**

REV. 00 - 11/09/2018

**Connector**

Ø6

AT Series



23AT0600

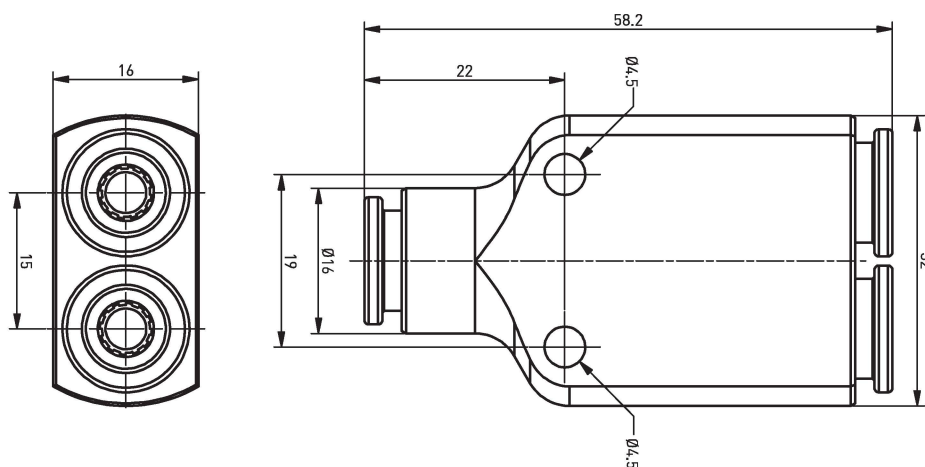


Y Connector

Ø6

AT Series

REV. 00 - 06/03/2019



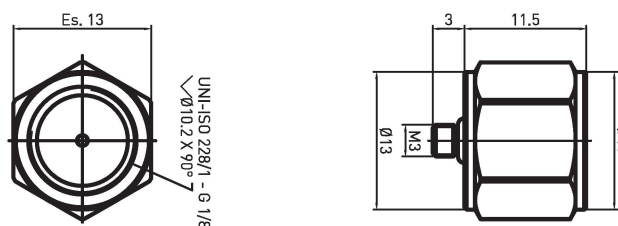
105ATM318



Adaptator

M3 - 1/8"

REV. 00 - 28/03/2018



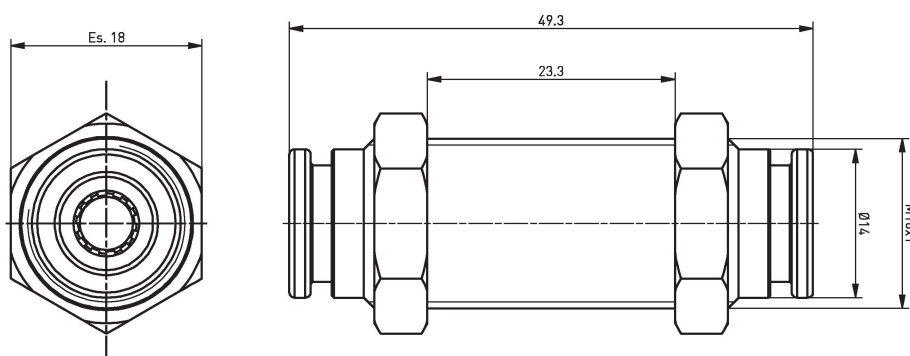
10AT0600



**Straight threaded
connector**

Ø6 - M16x1

REV. 00 - 22/05/2019



01AT0814

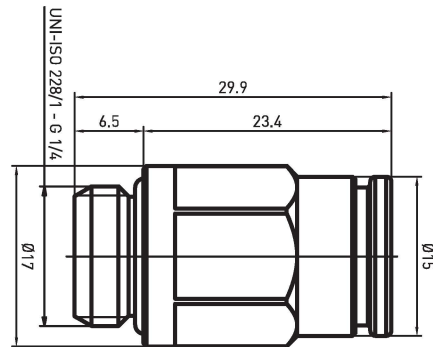
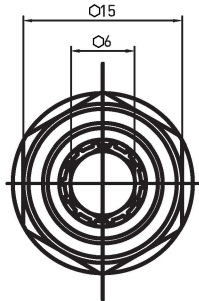
REV. 00 - 08/03/2018



Straight fitting

Ø8 G1/4"

AT Series with NBR seals



01AT0818

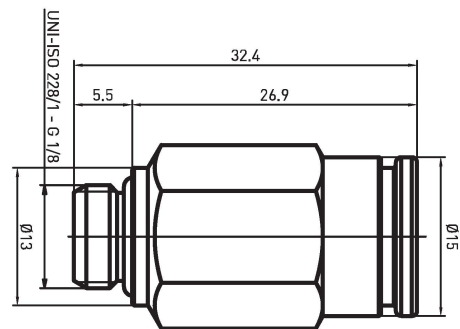
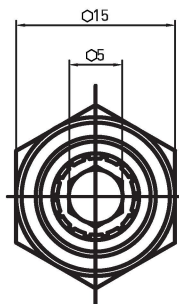
REV. 00 - 29/08/2018



Straight fitting

Ø8 G1/8"

AT Series with NBR seals



03AT0800

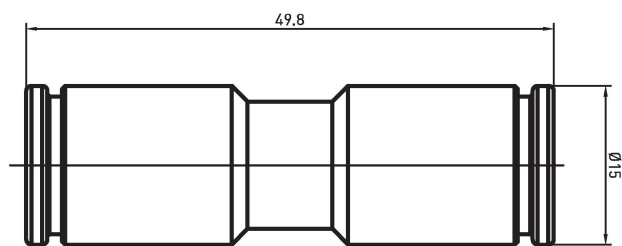
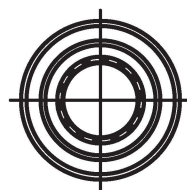
REV. 00 - 03/09/2018



Straight connector

Ø8

AT Series with NBR seals



04AT08L0

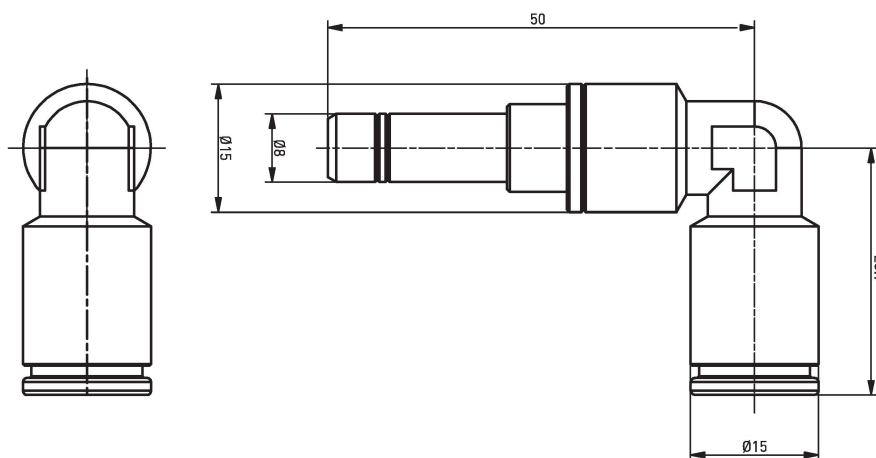


Elbow connector

Ø8

AT Series with NBR seals

REV. 00 - 14/10/2018



05AT0800

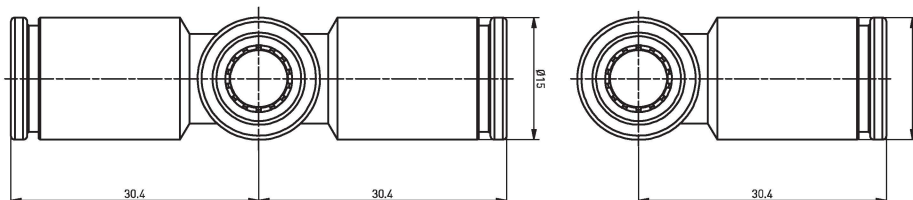


T connector

Ø8

AT Series with NBR seals

REV. 00 - 03/12/2018



08EAT0608

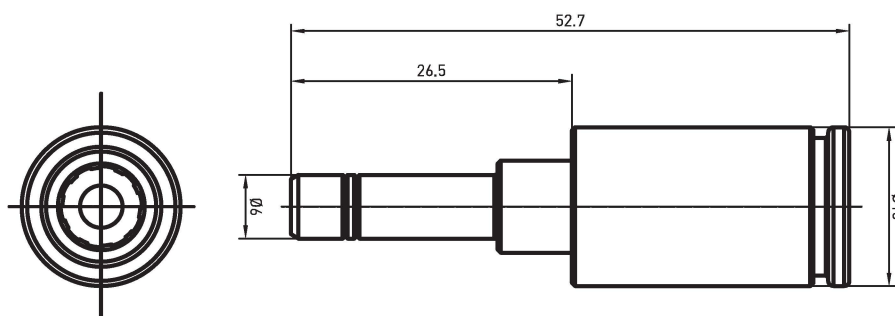


Plug-in increaser

Ø6M Ø8F

AT Series with NBR seals

REV. 00 - 22/05/2019



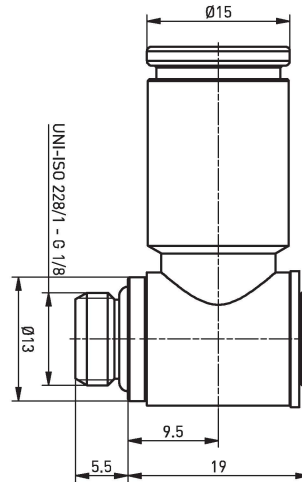
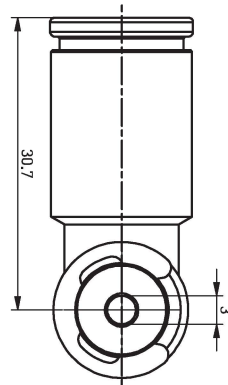
15AT0818

REV. 00 - 30/08/2018

**Complete single banjo**

Ø8 - G1/8"

AT Series with NBR seals

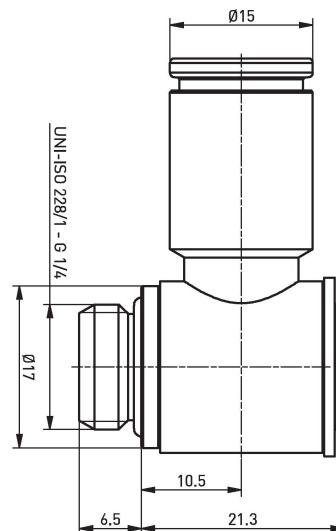
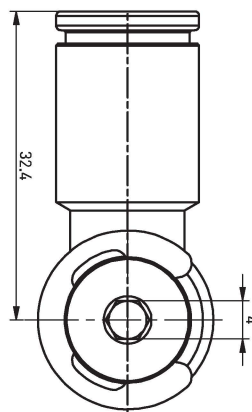
**15AT0814**

REV. 00 - 30/08/2018

**Complete single banjo**

Ø8 - G1/4"

AT Series with NBR seals

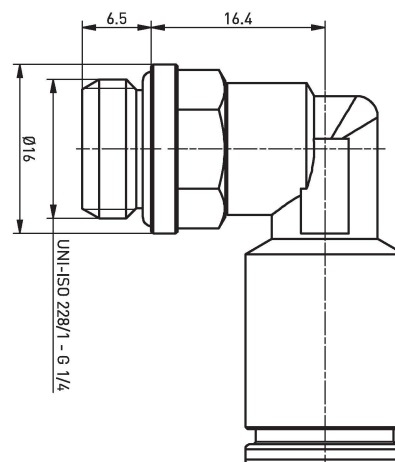
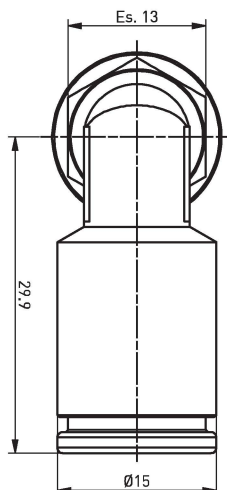
**22AT0814**

REV. 00 - 03/12/2018

**Swivel elbow male
adaptor parallel**

Ø8 - G1/4"

AT Series with NBR seals



22AT0818

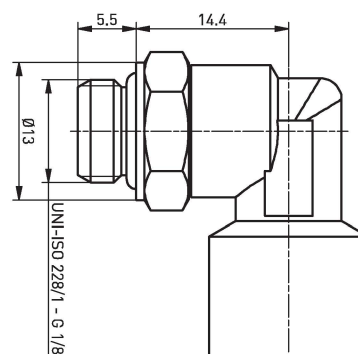
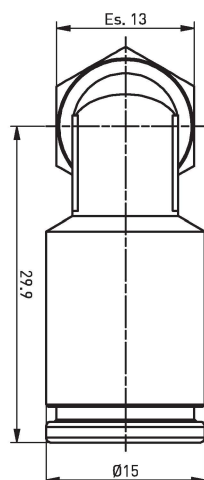
REV. 00 - 03/12/2018



**Swivel elbow male
adaptor parallel**

Ø8 - G1/8"

AT Series with NBR seals



22LAT0814

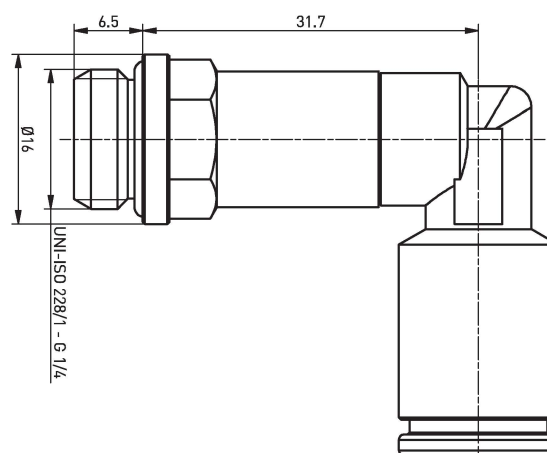
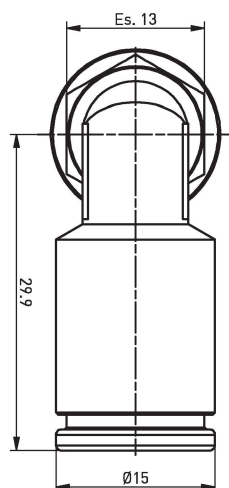
REV. 00 - 30/08/2018



**Swivel longer elbow
male adaptor parallel**

Ø8 - G1/4"

AT Series with NBR seals



22LAT0818

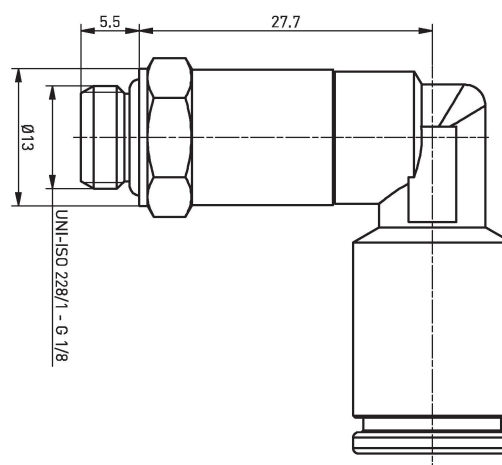
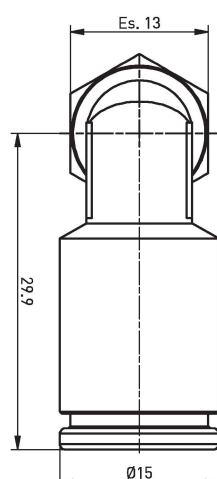
REV. 00 - 30/08/2018



**Swivel longer elbow
male adaptor parallel**

Ø8 - G1/8"

AT Series with NBR seals



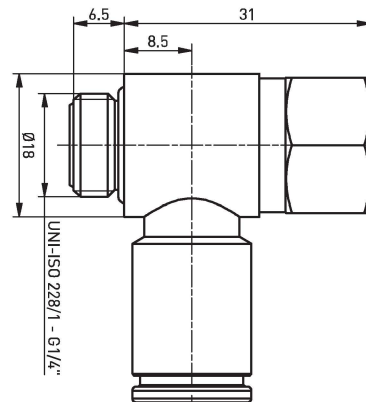
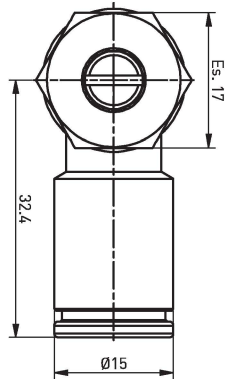
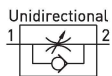
29AT0814

REV. 00 - 29/08/2018

**Flow adjuster**

Ø8 - G1/4"

AT Series with NBR seals

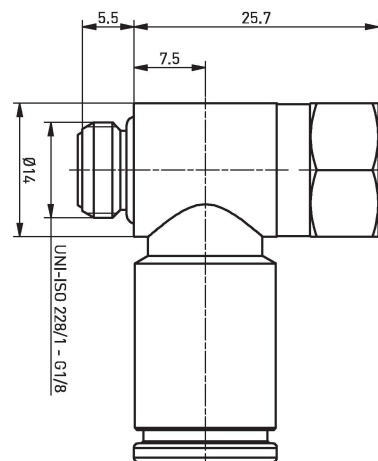
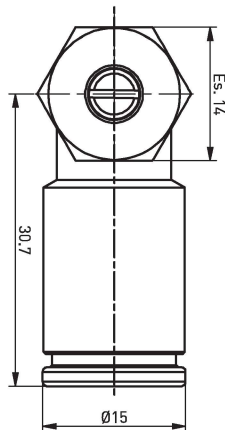
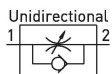
**29AT0818**

REV. 00 - 30/08/2018

**Flow adjuster**

Ø8 - G1/8"

AT Series with NBR seals

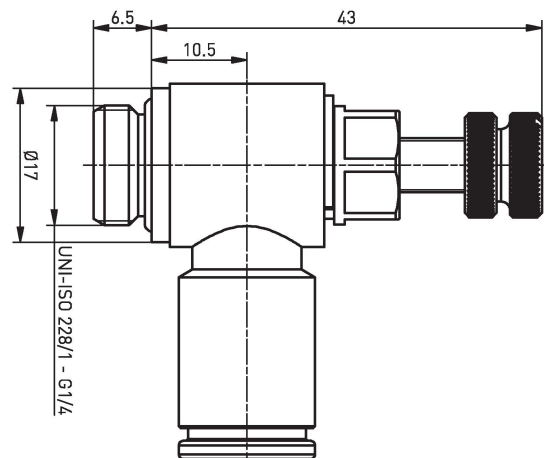
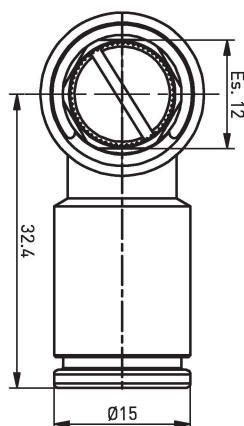
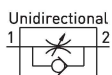
**29AT0814P**

REV. 00 - 11/10/2018

**Flow adjuster**

Ø8 - G1/4"

AT Series with NBR seals



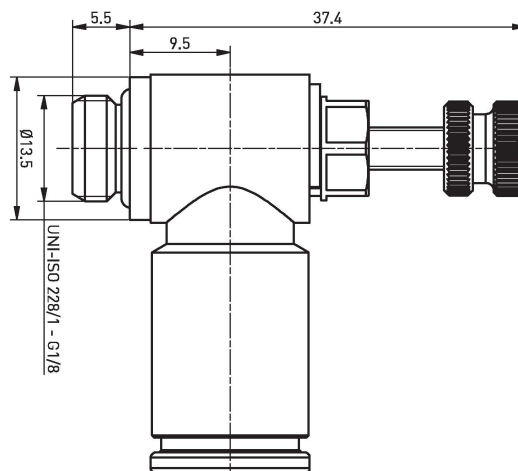
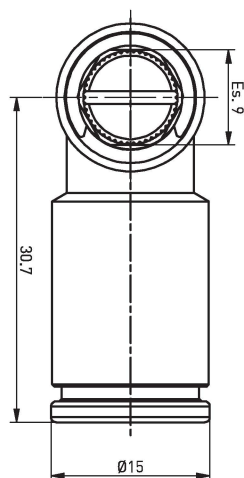
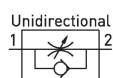
29AT0818P



Flow adjuster

8 - G1/8"

AT Series with NBR seals



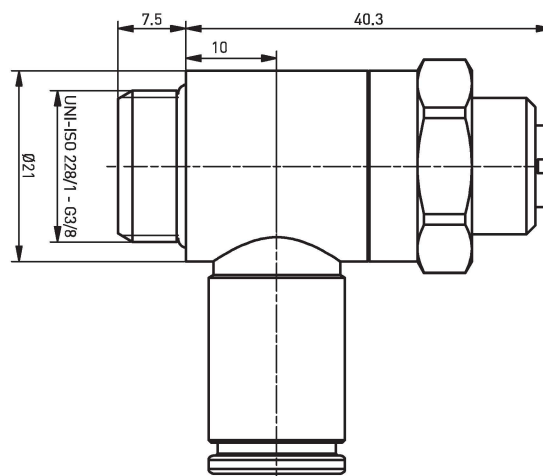
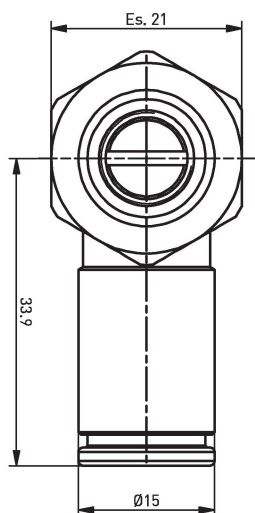
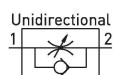
REV. 00 - 11/10/2018

29AT0838



Flow adjuster

Ø8 - G3/8



REV. 00 - 04/06/2019

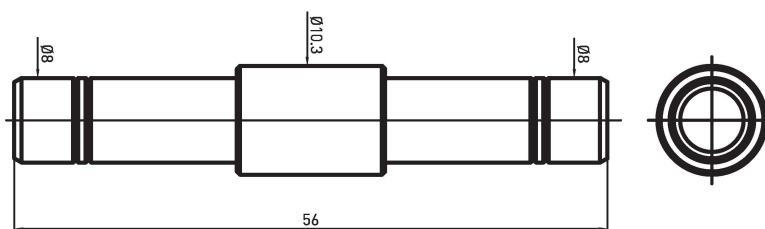
07AT0800



Connector

Ø8

AT Series



REV. 00 - 11/09/2018

23AT0800

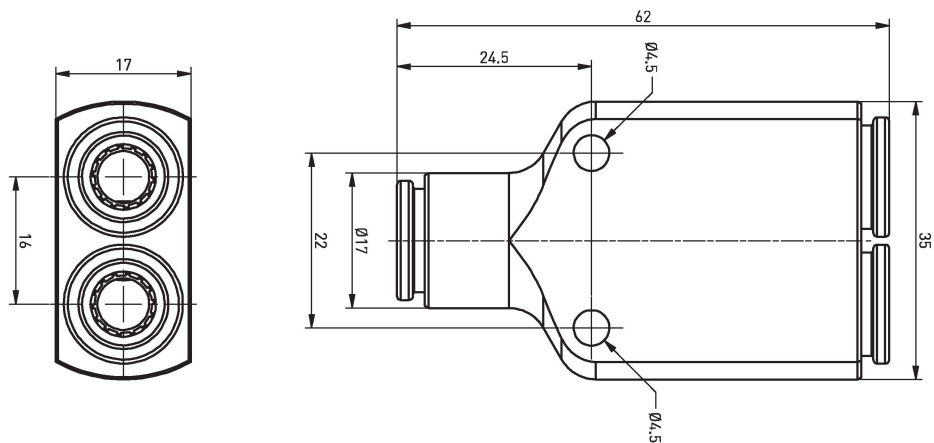
REV. 00 - 06/03/2019



Y Connector

Ø8

AT Series



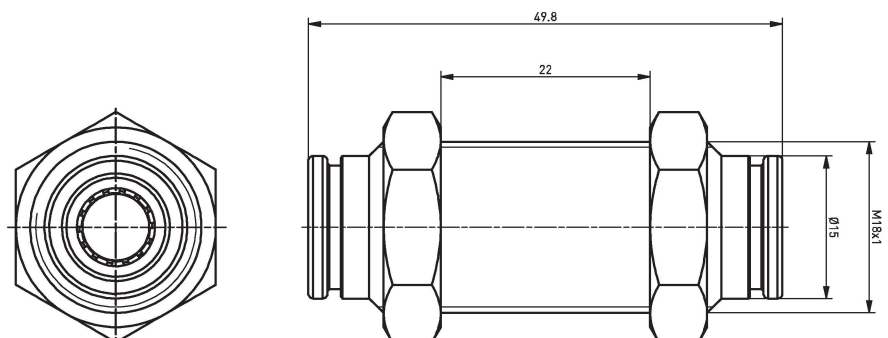
10AT0800

REV. 00 - 22/05/2019



**Straight threaded
connector**

Ø8 - M18x1



01AT1038

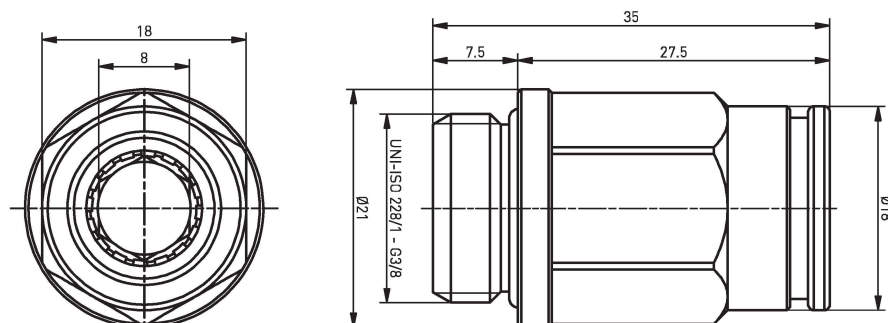
REV. 00 - 28/05/2019



Straight fitting

Ø10 G3/8"

AT Series with NBR seals



01AT1012

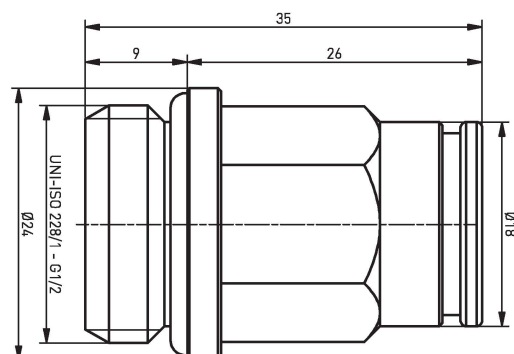
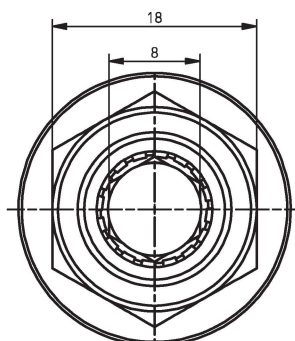
REV. 00 - 28/05/2019



Straight fitting

Ø10 G1/2"

AT Series with NBR seals



03FAT1000

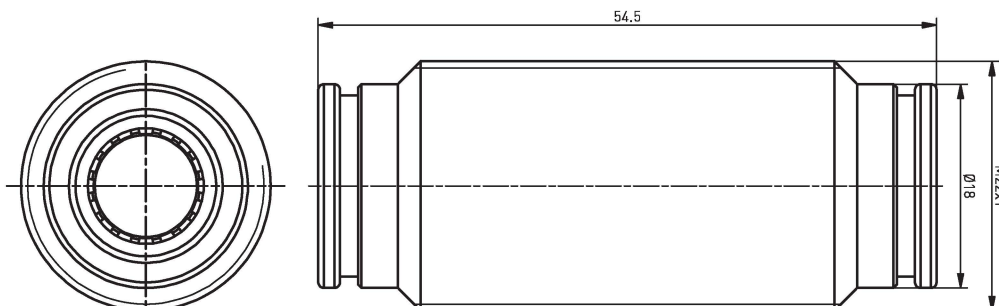
REV. 00 - 27/05/2019



Straight threaded connector

Ø10

AT Series with NBR seals



05AT1000

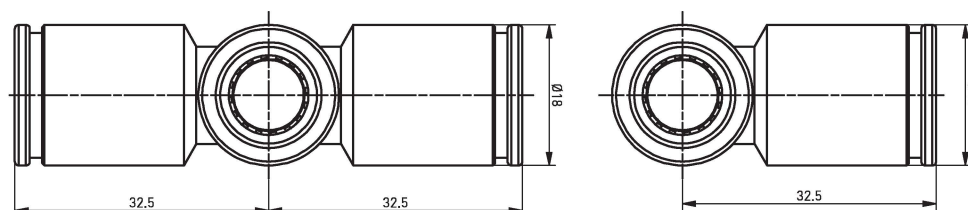
REV. 00 - 28/05/2019



T connector

Ø10

AT Series with NBR seals



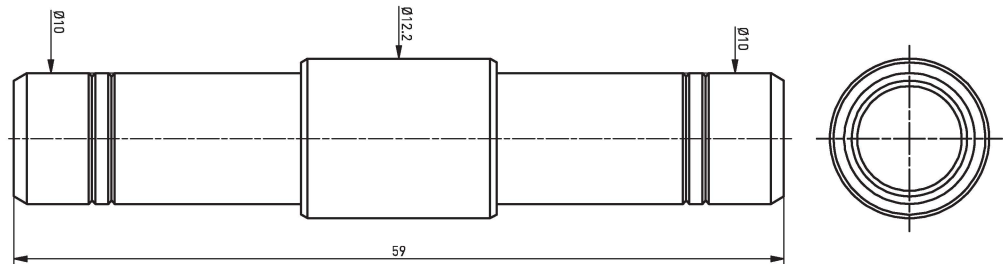
07AT1000

REV. 00 - 28/05/2019

**Connector**

Ø10

AT Series

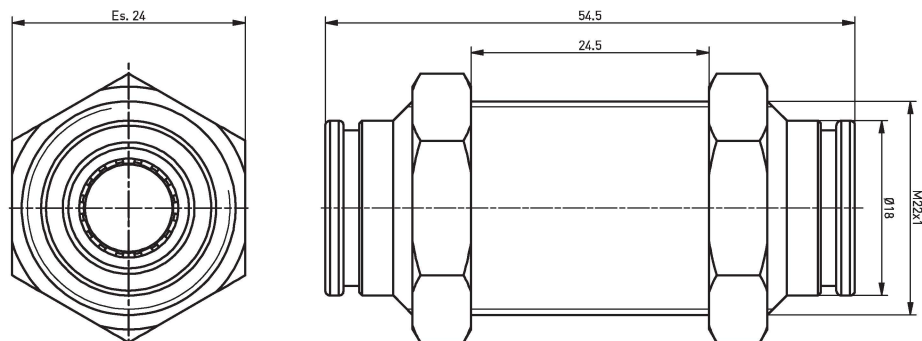
**10AT1000**

REV. 00 - 27/05/2019

**Bulkhead connector**

Ø10

AT Series with NBR seals

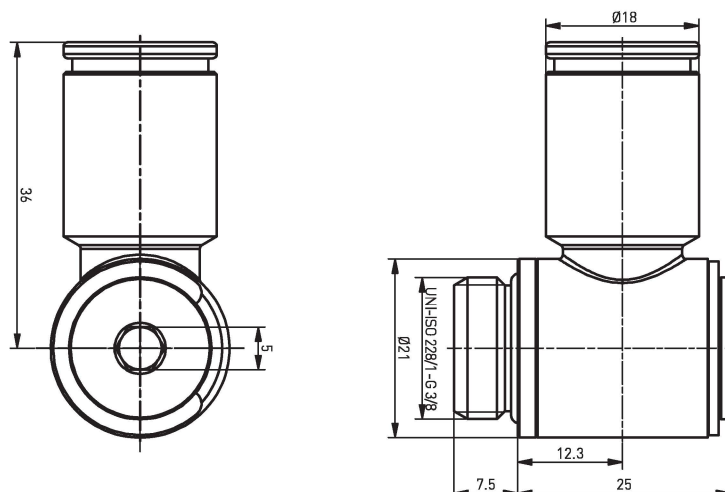
**15AT1038**

REV. 00 - 30/08/2018

**Complete single banjo**

Ø10 - G3/8"

AT Series with NBR seals



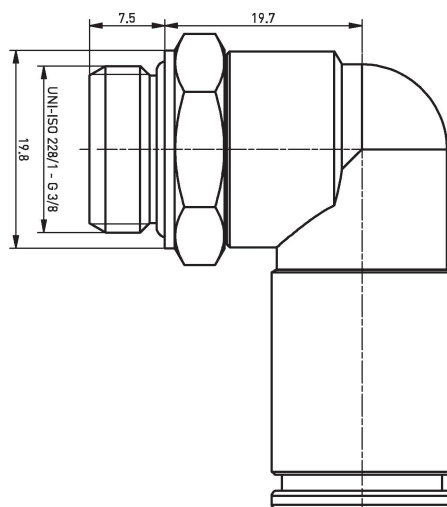
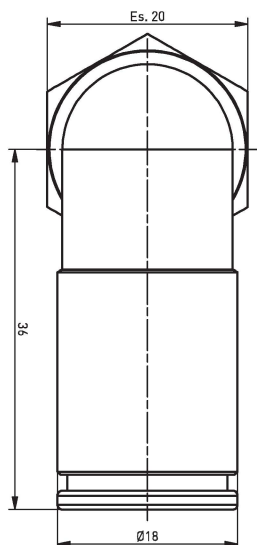
22AT1038



**Swivel elbow male
adaptor parallel**

Ø10 - G3/8"

AT Series with NBR seals



REV. 00 - 04/06/2019

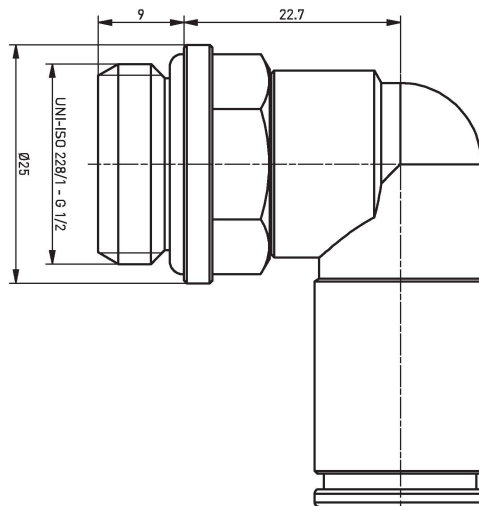
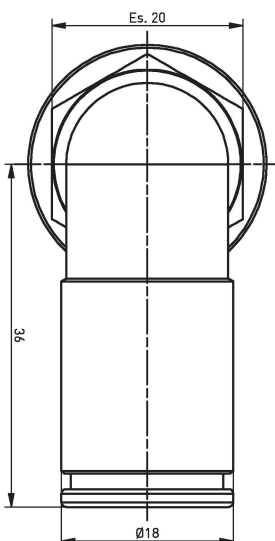
22AT1012



**Swivel elbow male
adaptor parallel**

Ø10 - G1/2"

AT Series with NBR seals



REV. 00 - 04/06/2019

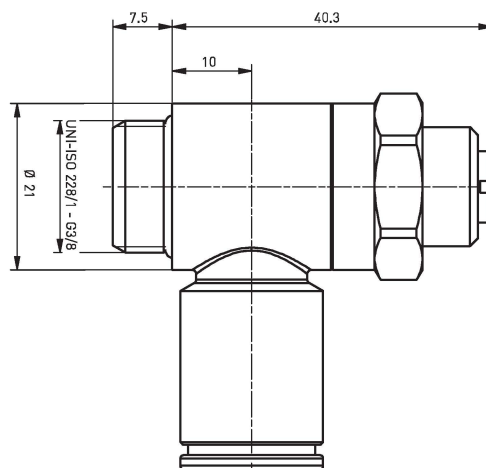
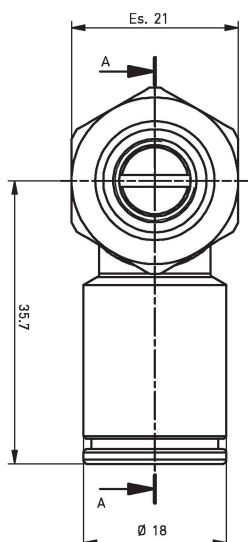
29AT1038



Flow adjuster

Ø10 - G3/8"

AT Series with NBR seals



REV. 00 - 04/06/2019

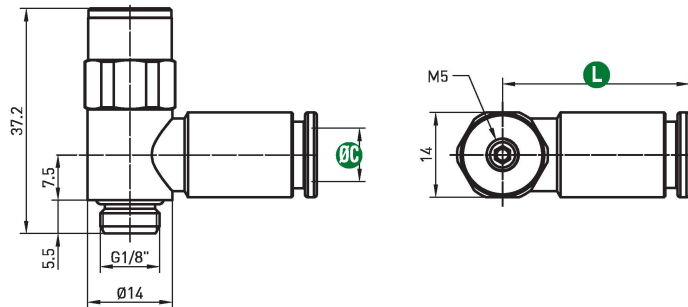
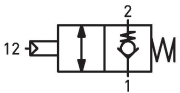
AT50C18V
Connection C 06 = Ring AT Ø6 08 = Ring AT Ø8 **Version V** U = Unidirectional B = Bidirectional


Part. No.	ØC	L
AT500618U AT500618B	6	31
AT500818U AT500818B	8	31

REV. 00 - 20/09/2019

Blocking valve

1/8"

**AT50C18PVM**
Connection C 06 = Ring AT Ø6 08 = Ring AT Ø8

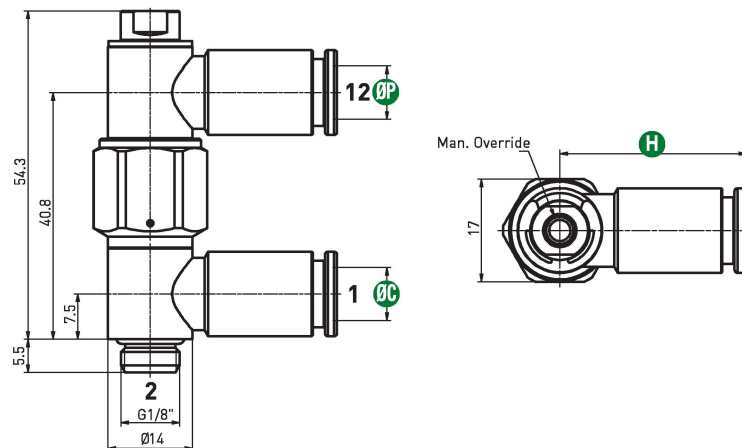
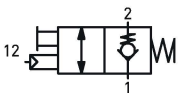
Pilot P 06 = Ring AT Ø6 08 = Ring AT Ø8 **Version V** U = Unidirectional B = Bidirectional


Part. No.	ØC ØP	H
AT50061806UM AT50061806BM	6	30.9
AT50081808UM AT50081808BM	8	30.7

REV. 00 - 20/09/2019

**Blocking valve
with manual override
and swivel pilot**

1/8"



AT50C14V

Connection C 06 = Ring AT Ø6 08 = Ring AT Ø8 **Version V** U = Unidirectional B = Bidirectional

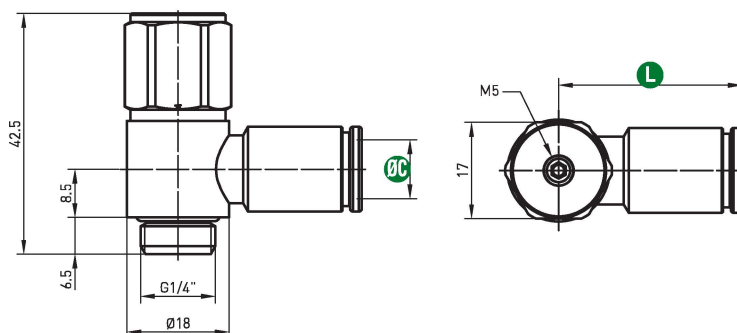
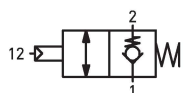
REV. 00 - 20/09/2019



Part. No.	ØC	H
AT500614U AT500614B	6	20
AT500814U AT500814B	8	30.9

Blocking valve

1/4"



AT50C14PVM

Connection C 06 = Ring AT Ø6 08 = Ring AT Ø8

Pilot P 06 = Ring AT Ø6 08 = Ring AT Ø8 **Version V** U = Unidirectional B = Bidirectional

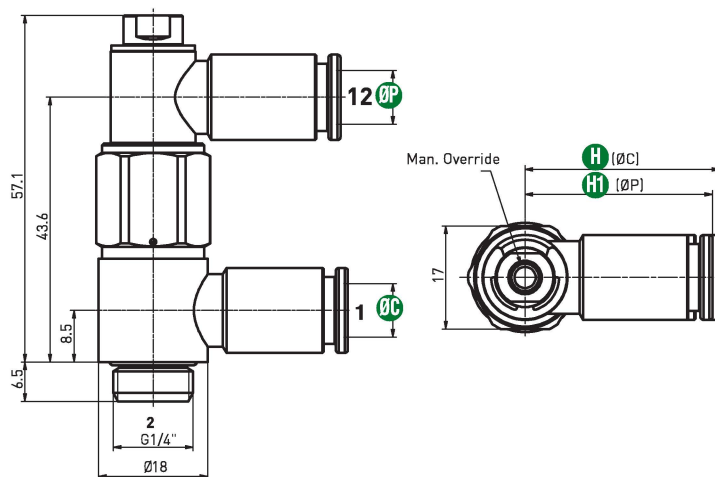
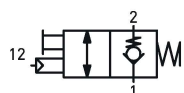
REV. 00 - 20/09/2019



Part. No.	ØP	H	ØC	H1
AT50061406UM AT50061406BM	6	30.9	6	32.1
AT50081408UM AT50081408BM	8	30.7	8	32.4

Blocking valve with manual override and swivel pilot

1/4"



AT50C38V
Connection C 08 = Ring AT Ø8 10 = Ring AT Ø10 **Version V** U = Unidirectional B = Bidirectional

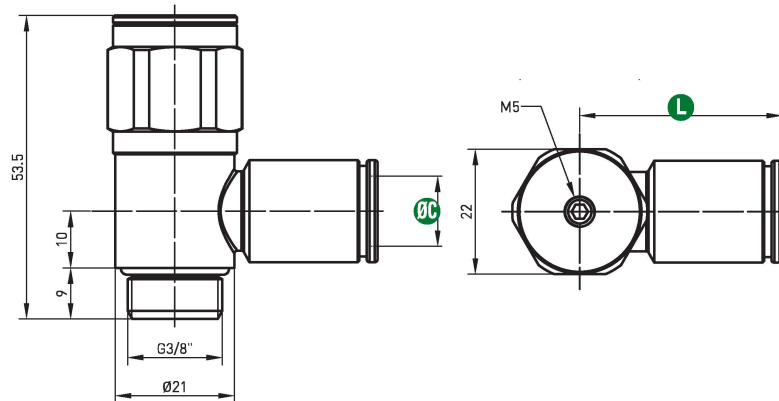
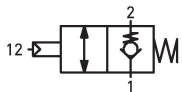
REV. 00 - 20/09/2019



Part. No.	ØC	L
AT500838U AT500838B	8	34
AT501038U AT501038B	10	36

Blocking valve

3/8"

**AT50C38PVM**
Connection C 08 = Ring AT Ø8 10 = Ring AT Ø10

Pilot P 06 = Ring AT Ø6 08 = Ring AT Ø8 **Version V** U = Unidirectional B = Bidirectional

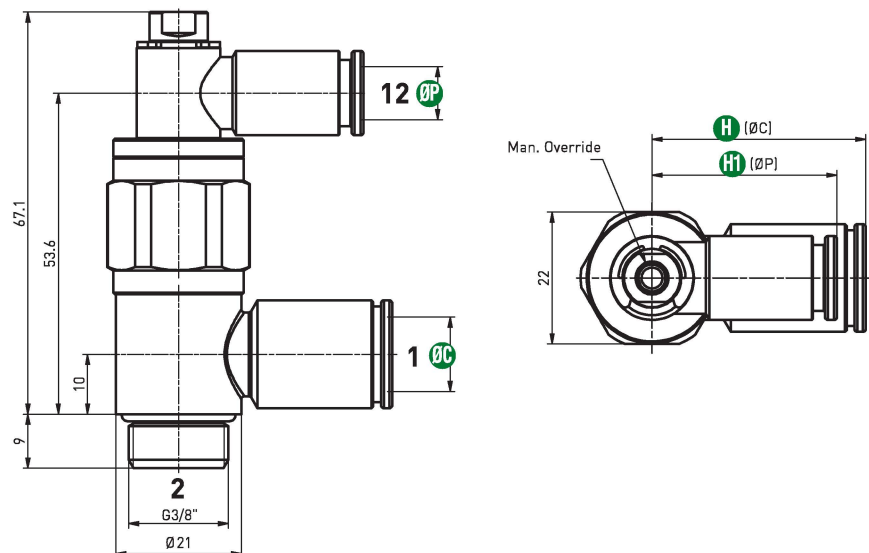
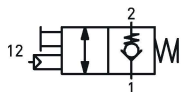
REV. 00 - 20/09/2019



Part. No.	ØP	H	ØC	H1
AT50083806UM AT50083806BM	6	30.9	8	33.9
AT50103808UM AT50103808BM	8	30.7	10	35.7

**Blocking valve
with manual override
and swivel pilot**

3/8"



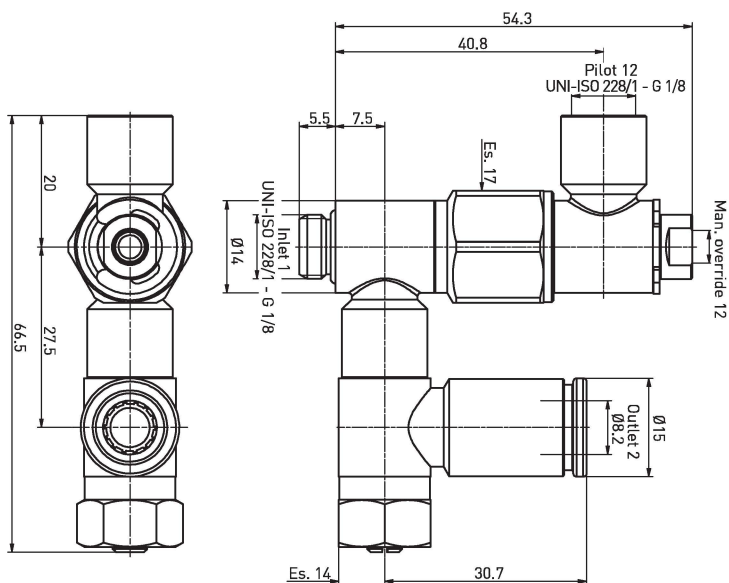
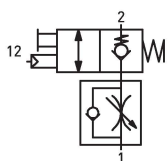
PNM0392

REV. 00 - 22/10/2018



**Blocking valve
with manual, flow adjuster
and swivel pilot
for Ø8 tubes**

G1/8"



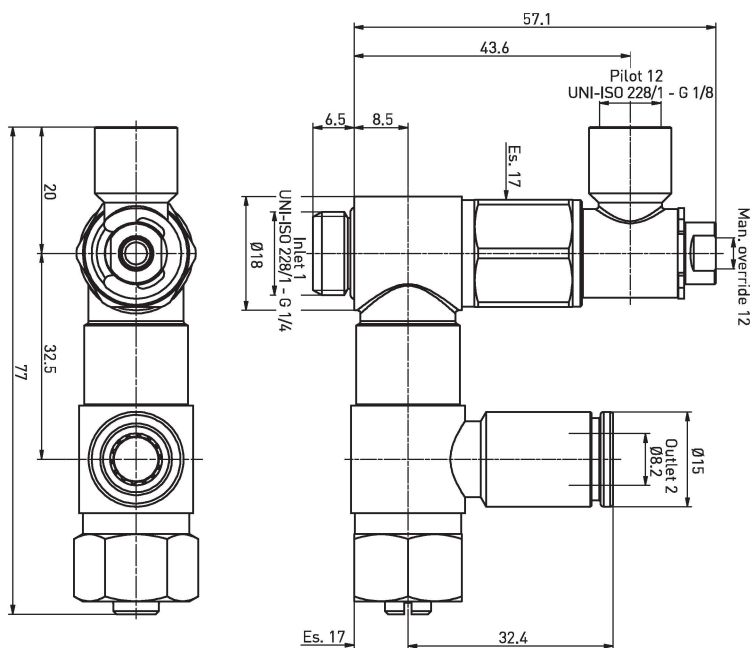
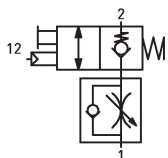
PNM0393

REV. 00 - 22/10/2018



**Blocking valve
with manual, flow adjuster
and swivel pilot
for Ø8 tubes**

G1/4"



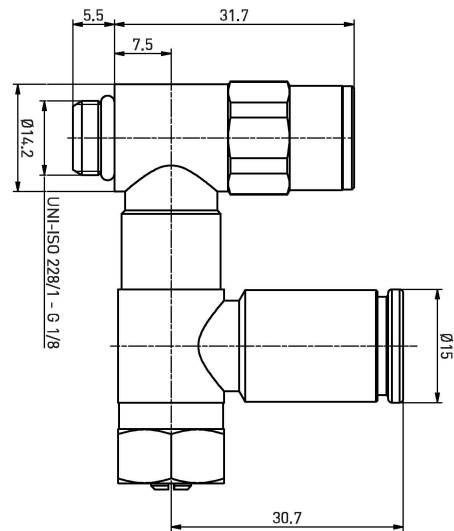
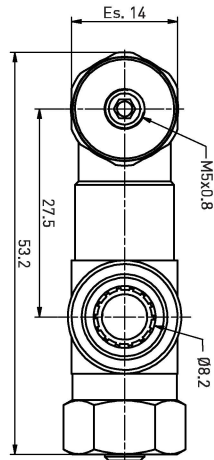
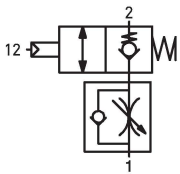
PNM0394

REV. 00 - 22/10/2018



**Blocking valve and flow
adjuster for Ø8 tubes**

G1/8"



PNM0395

REV. 00 - 22/10/2018



**Blocking valve and flow
adjuster for Ø8 tubes**

G1/4"

