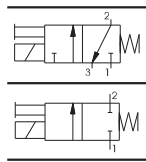
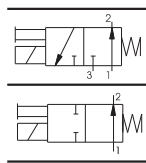
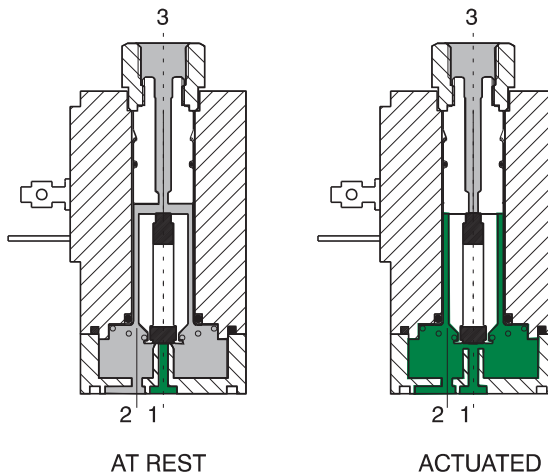


Functional schematic

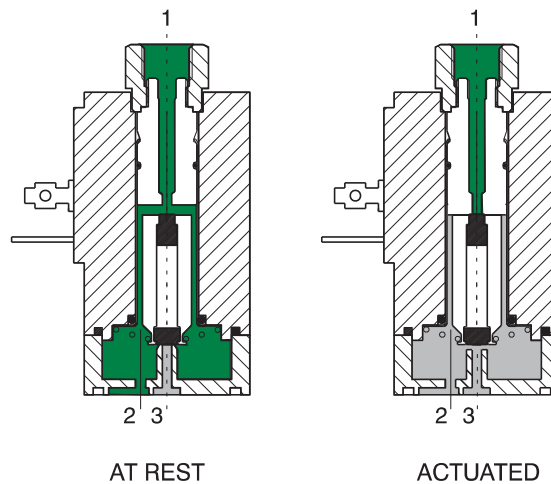


- 1 = INLET PORT
- 2 = OUTLET PORT
- 3 = EXHAUST PORT
(Plugged if 2/2)

Normally Closed (N.C.) 3/2 or 2/2



Normally Open (N.O.) 3/2 or 2/2



Construction characteristics

Electrical parts:

Solenoids: the solenoid consists of coils having different diameter copper wire windings insulated according standards "H"; they are encased in a nylon-glass compound. All parts are corrosion resistant.

Mechanical parts:

Stainless steel tube and plunger (AISI 430F), stainless steel adjusted springs, viton poppet seals, tropicalized zinc alloy interface plate, nitrile (NBR) seal nicked brass manual override, nickel steel coil lock nut, zinc steel mounting screws. To be usable, the solenoids have to be attached either to a base or directly to the distributor's operators by means of connectors G 1/8". Electrical connectors are standard. These solenoid are available in all voltages and frequencies used in the world. The following are the technical characteristics of the solenoid.

1 AIR DISTRIBUTION



Technical characteristics

| | | |
|------------------|--|------------------------|
| Pneumatic | Working pressure | 0 ... 10 bar |
| | Orifice size | 1,8 mm |
| | Maximum fluid temperature | 50°C |
| | Maximum ambient temperature | 50°C |
| | Maximum flow rate at 6 bar with $\Delta p = 1$ | 80 NI/min |
| | Cycles/minute | 700 |
| | Fluids | Air-Vacuum-Inert gases |
| | Lubrication | Not required |
| | Life | 40 to 50 millions |
| Electric | Power consumption (inrush) - D.C. | - |
| | Power consumption (inrush) - A.C. | 19,5 VA |
| | Power consumption holding - D.C. | 8,2 W |
| | Power consumption holding - A.C. | 9 VA |
| | Operating voltage tolerance | $\pm 10\%$ |
| | Response time opening * | 15 ms |
| | Response time closing * | 30 ms |
| | Insulation of the copper wire | H |
| | Insulation of the coil | F |
| | Connector protection | IP 65 |
| Cable protection | DIN 43650 "A" FORM | |

(*) "Shifting time of pneumatic directional control valves or moving parts, logic devices were measured in accordance to ISO 12238:2001, Pneumatic fluid power - Directional control valves - Measurement of shifting time"

Maintenance and replacement parts

Maintenance practices for these valves are similar to those already detailed for other products - replacement of the plunger or poppet is not advisable since the new replacement would not provide the best fit with the rest of the already used valve.

Special care should be taken that no dirt is accumulated between the working surface of fixed cores 3 and the plunger 2 which would result in vibrations and overheating of the solenoid. In the case of microsolenoid it must be assured that the alternate current coil is not charged when the mechanical part is not mounted to avoid destruction of the coil.

The electrical connections have to be perfect, especially where low currents are used (12-24 V). Oxidation of contacts between the connector and the coil can lead to intermittent malfunctions which are difficult to trace. Oxidation of contacts due to humidity or corrosive atmosphere are one of the most common causes of false alarms. Clean the contacts with appropriate spray.

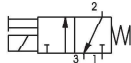


Solenoid valve S and S/1



Weight 220 g

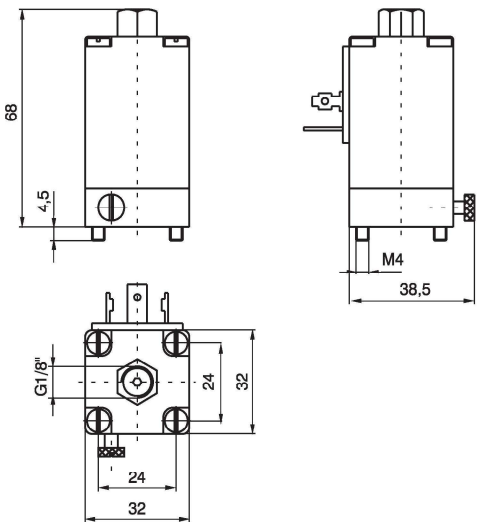
Normally Closed
(N.C.) - S



Normally Open
(N.O.) - S/1



1
AIR DISTRIBUTION



| Ordering code | | Available voltages Coil | |
|---------------|---------------|-------------------------|---------------------------------|
| S 2 | S 2/1 | 6 D.C. | Direct current |
| S 4 | S 4/1 | 12 D.C. | |
| S 5 | S 5/1 | 24 D.C. | |
| S 6 | S 6/1 | 48 D.C. | |
| S 16 | S 16/1 | 12/50 | Alternating current 50 Hz |
| S 17 | S 17/1 | 24/50 | |
| S 19 | S 19/1 | 32/50 | |
| S 20 | S 20/1 | 42/50 | |
| S 21 | S 21/1 | 48/50 | |
| S 22 | S 22/1 | 110/50 | |
| S 23 | S 23/1 | 115/50 | |
| S 24 | S 24/1 | 230/50 | |
| S 36 | S 36/1 | 12/60 | Alternating current 60 Hz |
| S 37 | S 37/1 | 24/60 | |
| S 38 | S 38/1 | 48/60 | |
| S 39 | S 39/1 | 110/60 | |
| S 40 | S 40/1 | 115/60 | |
| S 41 | S 41/1 | 230/60 | |
| S 56 | S 56/1 | 24/50-60 | Alternating current 50/60 Hz |
| S 57 | S 57/1 | 110/50-60 | |
| S 58 | S 58/1 | 230/50-60 | |

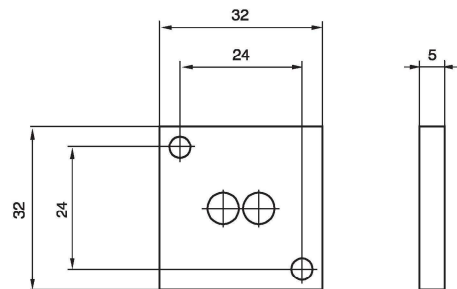
Closing plate

Ordering code

300.12.00



Weight 14 g



External feeding base

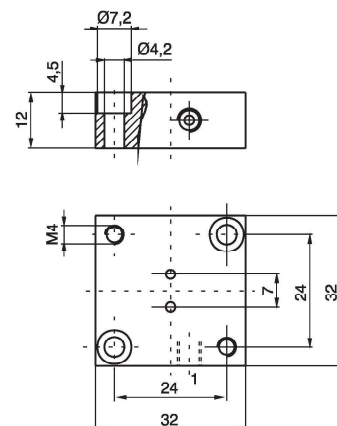
To be used with electrodistributeurs to get a different piloting pressure from the line one.

Ordering code

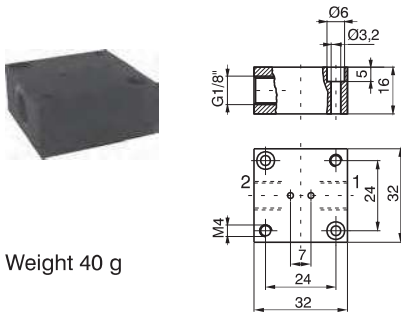
300.10.05



Weight 35 g



Individual base



Weight 40 g

In line port - thread G 1/8"
1 = INLET PORT (N.C.)
2 = OUTLET PORT (N.C.)
With solenoid valve N.O.
1 = EXHAUST PORT
2 = OUTLET PORT

Ordering code

300.04.00



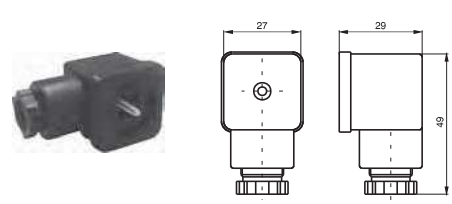
Weight 40 g

90° Port - thread G 1/8"
1 = INLET PORT (N.C.)
2 = OUTLET PORT (N.C.)
With solenoid valve N.O.
1 = EXHAUST PORT
2 = OUTLET PORT

Ordering code

300.04.90

Electrical connector



Weight 25 g

Ordering code

300.11.00 Standard
300.11.0 L Led
1 = 24 V D.C. / A.C.
2 = 110 V 50/60 Hz
3 = 230 V 50/60 Hz

Modular bases for series mounting

Ordering code

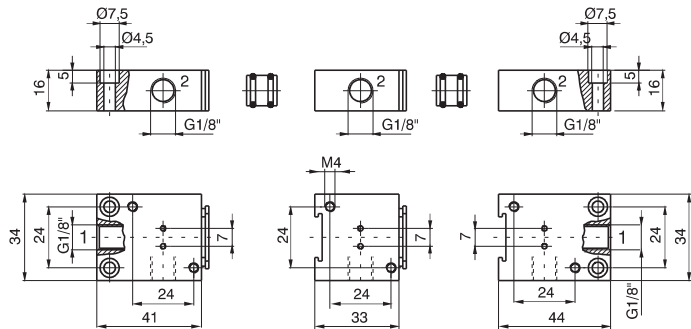
Initial base
300.05.00

Intermediate base
300.06.00

Last base
300.07.00

Bored spacer
300.05.01
Weight 5 g

Solid spacer
300.05.02
Weight 6 g



Initial base

Intermediate base

Last base



Weight 52 g

Weight 40 g

Weight 52 g

Multiple integral bases for series mounting



Ordering code

300.08.02 2 positions
300.08.03 3 positions
300.08.04 4 positions
300.08.05 5 positions

